



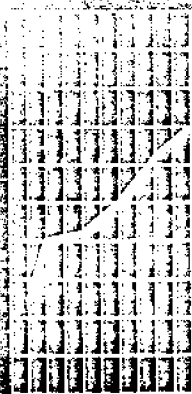
August 1996

EMBARGOED UNTIL 11.30 AM MON 11 NOVEMBER 1996

Labour Force

New South Wales and
Australian Capital Territory

Statistics



NOTES

This publication contains estimates of the civilian labour force in NSW and the ACT derived from the Labour Force Survey component of the Monthly Population Survey, which is conducted on a sample basis throughout Australia.

Explanatory Notes for data contained in this publication can be found on page 47.

Care should be taken in the interpretation of month-to-month movements in estimates. Survey estimates are subject to sampling and non-sampling variability as explained in the Technical Note on Data Reliability on page 59.

.....

CHANGES THIS ISSUE

Change in occupation classification: Labour force occupation data for employed and unemployed people is classified according to the Second Edition of the Australian Standard Classification of Occupations, starting with the publication of data for August 1996. Work has commenced to produce historical data based on the new classification.

Introduction of telephone interviewing: The ABS is progressively introducing the use of telephone interviewing into the Labour Force Survey (LFS). Households selected for the LFS are interviewed each month for 8 months, with one eighth of the sample being replaced each month. The first interview continues to be conducted face-to-face with subsequent interviews conducted by telephone (if acceptable to the respondent). Telephone interviewing is being phased in for each new sample group from August 1996 and will be fully implemented by February 1997. The ABS is confident that the adoption of this method will result in no noticeable impact on the estimates.

.....

INQUIRIES

For information about statistics in this publication and the availability of related unpublished statistics, contact the following—

ABS NSW office — Client Services Statistical Support on Sydney (02) 9268 4398 or
Elizabeth Pogson on Sydney (02) 9268 4212

ABS ACT office — Tim Power on Canberra (06) 207 0244

For information about other ABS statistics and services, please refer to the back of this publication.

Gregory W. Bray
Regional Director
New South Wales

CONTENTS

.....

Page

SUMMARY OF FINDINGS

New South Wales	4
Australian Capital Territory	9

LIST OF TABLES AND GRAPHS

New South Wales	12
Australian Capital Territory	14

INFORMATION

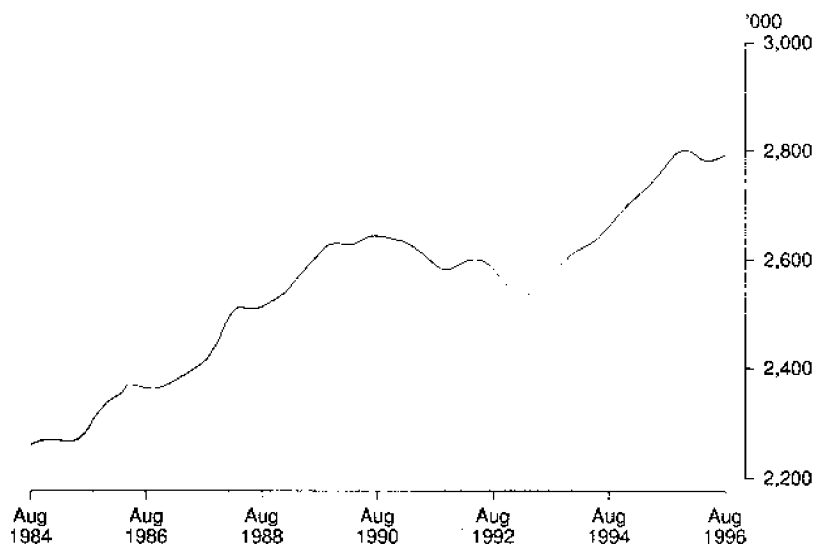
Explanatory notes	47
Appendix:	
Supplementary topics	52
Regions of NSW	53
Regions of NSW — maps	58
Technical note: data reliability	59
Standard errors	62

SUMMARY OF FINDINGS: New South Wales

TREND ESTIMATES

Employed Persons

In August 1996 the trend estimate of **employed** people in NSW was 2,791,700. The estimate increased for the third consecutive month and followed a period of several months early in 1996 when the estimate decreased.

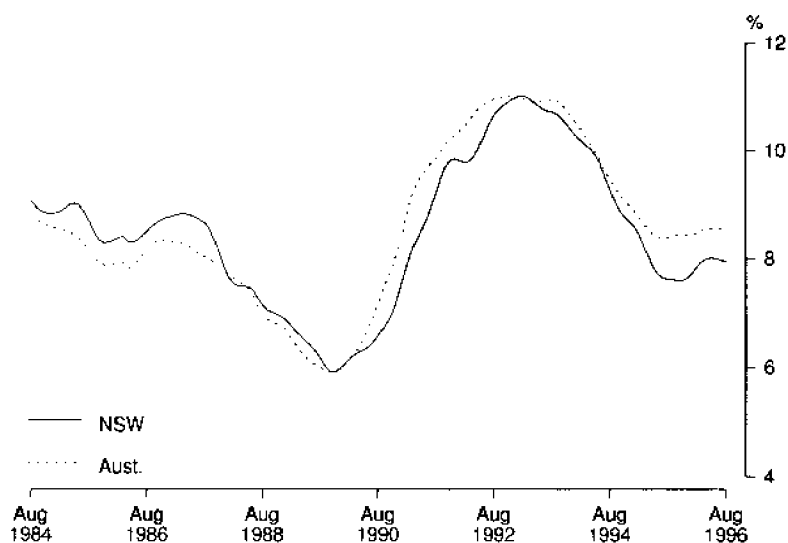


Unemployed Persons

The trend estimate of **unemployed** people reached a peak of 314,500 in January 1993 and then generally fell, to reach a low of 228,800 in July 1995. The estimate then rose each month until May 1996 and has since declined, to stand at 241,600 in August 1996.

Unemployment Rate

The trend **unemployment rate** was 8.0% in August 1996 and has been at this level since March 1996.



The trend series **participation rate** was 62.2% in August 1996 and the trend estimate of the **labour force** was 3,033,300.

SUMMARY OF FINDINGS: New South Wales *continued*

SEASONALLY ADJUSTED ESTIMATES

In August 1996, the seasonally adjusted estimate of **employment** in NSW was 2,799,100. The estimate generally increased throughout 1995, but has fluctuated throughout 1996. The August 1996 estimate was slightly higher than a year ago.

The seasonally adjusted estimate of **unemployment** was 247,900 in August 1996. Males represented 62% of the unemployed compared with 59% a year ago.

The seasonally adjusted **unemployment rate** rose from 7.9% in July to 8.1% in August. The rate was 8.7% for males and 7.3% for females.

The seasonally adjusted estimate of the **participation rate** was 62.5% in August 1996, the same as August 1995. The rate was 73.0% for males and 52.3% for females. In August 1996 the seasonally adjusted **labour force** estimate was 3,046,900. This was an increase of 41,200 (1.4%) since August 1995.

LABOUR FORCE, NSW: TREND AND SEASONALLY ADJUSTED ESTIMATES

LABOUR FORCE

	<i>Employed</i>	<i>Unemployed</i>	<i>Unemployment rate</i>	<i>Participation rate</i>
	'000	'000	%	%
TREND				
1996				
May	2,781.9	242.5	8.0	62.3
June	2,784.3	242.1	8.0	62.2
July	2,787.8	241.6	8.0	62.2
August	2,791.7	241.6	8.0	62.2

SEASONALLY ADJUSTED

1996				
May	2,774.6	241.8	8.0	62.1
June	2,794.6	232.4	7.7	62.2
July	2,788.1	238.5	7.9	62.1
August	2,799.1	247.9	8.1	62.5

SUMMARY OF FINDINGS: New South Wales *continued*

REGIONS OF NSW

While the Labour Force Survey is designed primarily to produce reliable estimates at the national and State/Territory level, it also delivers estimates for a number of regions within States. As with national and State estimates, regional labour force estimates are subject to sampling error. Since estimates for regions are components of corresponding estimates at the State level — and are thus based on a considerably smaller sample size — they are subject to higher relative standard errors. Care should therefore be taken in interpretation of regional estimates, particularly month to month movements.

Sydney

In August 1996 the estimated number of people **employed** in the Sydney Major Statistical Region (MSR) was 1,808,100.

The **unemployment rate** was 6.7% in August 1996 compared with 6.9% in August 1995. During the 12 months the rate has fluctuated between 6.3% and 7.8%. In August 1996 the rate for males was 7.4% and the rate for females 5.7%.

In August 1996 the highest **unemployment rates** within Sydney MSR occurred in Fairfield–Liverpool Statistical Region (SR) with 15.7%, the combined Fairfield–Liverpool and Outer South Western Sydney SRs (12.0%) and Central Western Sydney SR (11.1%).

The **participation rate** for Sydney MSR was 63.7% overall, with a rate of 74.1% for males and 53.7% for females. Rates varied from 58.2% in Central Western Sydney SR to 68.1% in Eastern Suburbs SR.

Balance of NSW

In August 1996 the number of **employed** people in this area of NSW was 972,400.

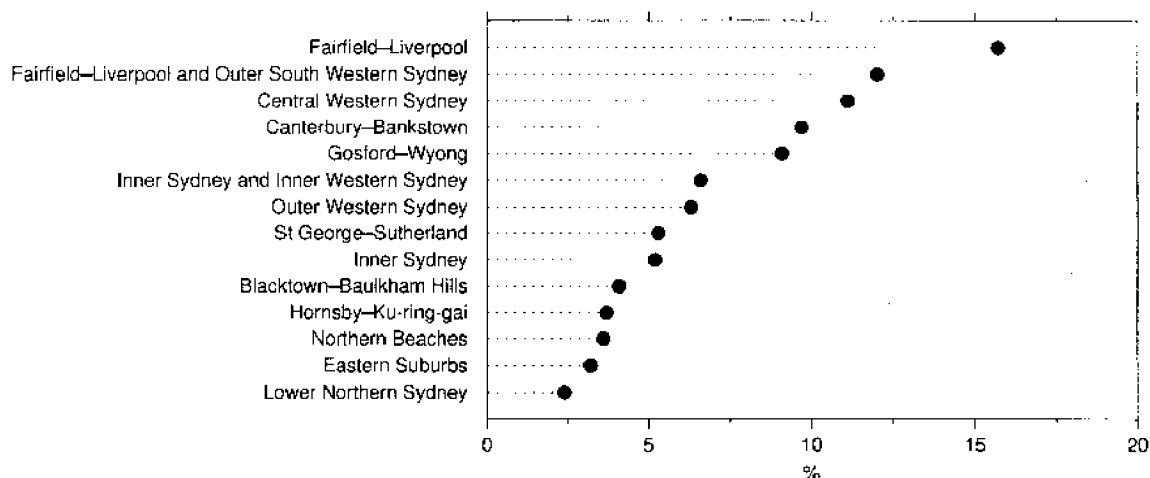
The **unemployment rate** in August 1996 was 10.1% compared to 8.8% in August last year. The unemployment rate varied from 6.5% in the combined Northern, Far West–North Western and Central West SRs to 15.1% in the combined Richmond–Tweed and Mid-North Coast SRs.

The **participation rate** for the Balance of NSW MSR was 58.9% in August 1996. The rate was 69.6% for males and 48.4% for females.

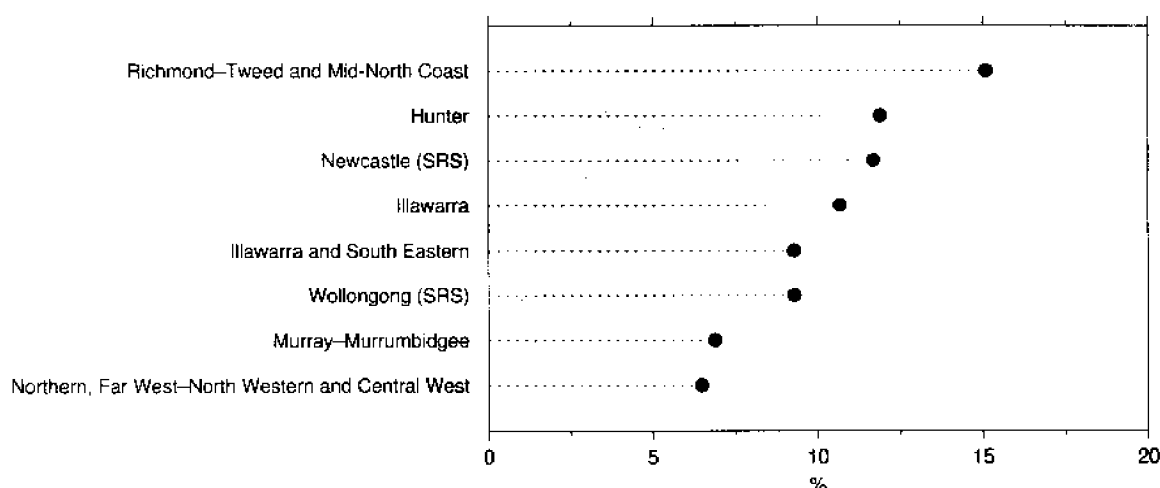
SUMMARY OF FINDINGS: New South Wales *continued*

Unemployment Rate, Regions of NSW, August 1996

Sydney MSR



Balance of NSW MSR



AGE

In August 1996, unemployment rates in NSW were highest for 15-19 year olds (17.7%) and 20-24 year olds (10.1%). The rates for both groups and for those aged 35-44 years were lower than 12 months ago, while the rates for those aged 25-34 years were the same. The unemployment rates for people 45-54 years of age and 55 and over had both increased in the last 12 months.

In August 1996, an estimated two-fifths of unemployed 15-19 year olds were looking for part-time work. The majority of these were students studying full-time. For 15-19 year olds who were not full-time students, the unemployment rate was 19.4%.

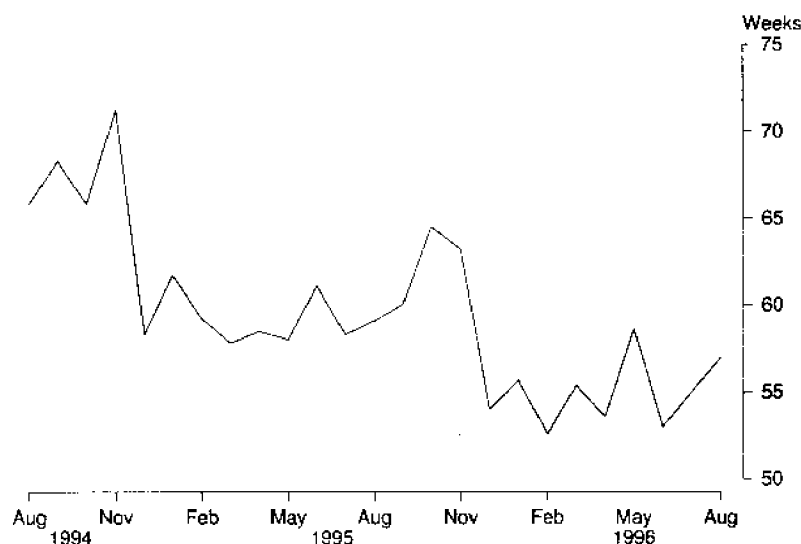
Part-time workers represented nearly one-quarter of all employed people in August 1996, but this proportion varied between age groups. The highest levels were among those aged 15-19 years with 62% and those aged 65 years and over with 43%.

SUMMARY OF FINDINGS: New South Wales *continued*

DURATION OF UNEMPLOYMENT

In August 1996 the long term unemployed (people unemployed 52 weeks and over) represented 29% of all unemployed people. This compared with 34% a year earlier. The average duration of unemployment in August 1996 was 57 weeks. Average duration of unemployment increased with age, starting at 22 weeks for people aged 15-19 years and rising to an average of 89 weeks for people aged 45 years and over.

Average duration of unemployment, NSW



INDUSTRY AND OCCUPATION

Note: From August 1996, occupation data are classified to the Australian Standard Classification of Occupations, Second Edition.

The industries with the largest number of employees in NSW in August 1996 were *Retail trade* with 418,300 (or 15% of the total) and *Manufacturing* with 374,00 (13%).

These industries also employed the largest number of people in Sydney MSR with 257,100 (14%) in *Retail trade* and 253,400 (14%) in *Manufacturing*. *Retail trade* had the largest in Balance of NSW MSR with 17%, followed by *Manufacturing* (12%) and *Agriculture, forestry and fishing* (10%).

The largest occupation group in NSW was *Professionals* with 498,600 (18% of the total) followed by *Intermediate clerical, sales and service workers* with 453,300 (16%). *Professionals* were also the largest occupation group in Sydney MSR with 20% of the total, while *Tradespersons and related workers* were the largest group in Balance of NSW MSR with 15%.

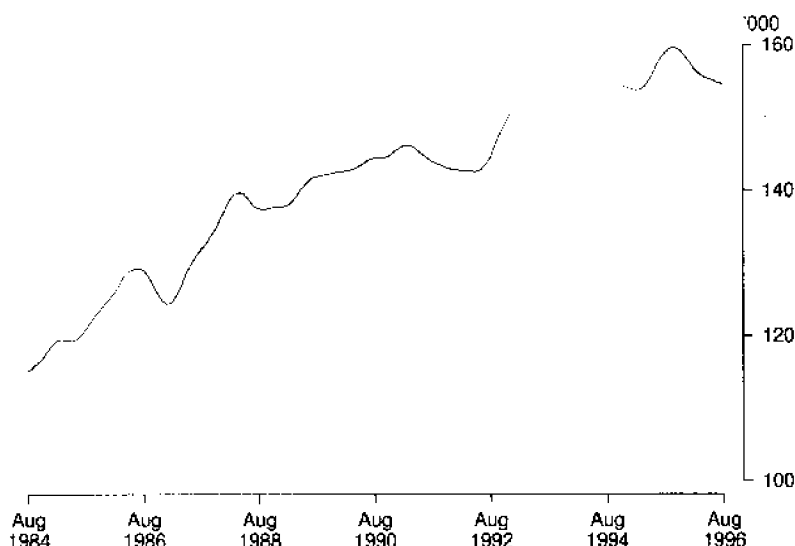
SUMMARY OF FINDINGS: Australian Capital Territory

Note: Seasonally adjusted estimates are not available for the ACT.

TREND ESTIMATES

Employed persons

The trend estimate of the number of **employed** people in the ACT has fallen for each of the last 10 months from a peak of 159,700 in October 1995 to 154,700 in August 1996 (an overall fall of 3.1%).

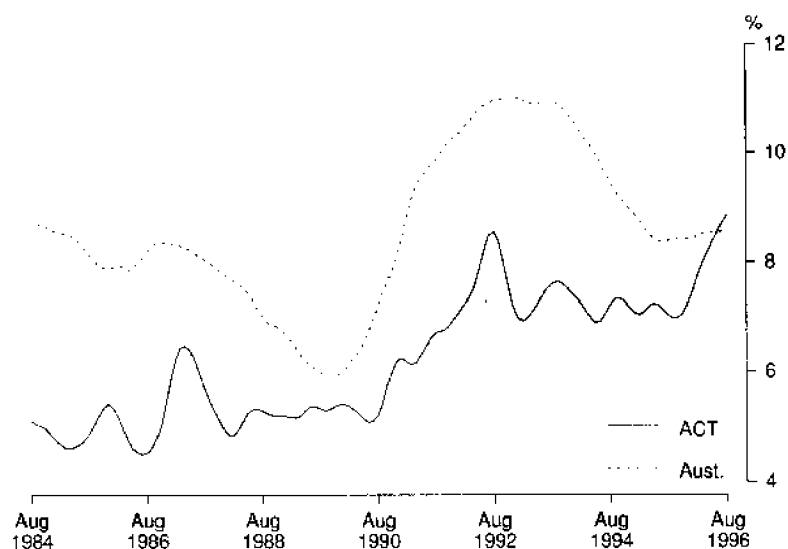


Unemployed persons

The trend estimate of **unemployment** was 15,100 in August 1996 compared with 12,000 in August 1995. It has increased for each of the last 11 months.

Unemployment rate

The trend estimate of the **unemployment rate** has steadily increased from 7.0% over the period August–November 1995 to reach a record 8.9% in August 1996. The unemployment rate was 8.8% for males and 8.9% for females.



The ACT **participation rate** was 72.8% in August 1996 and the **labour force** estimate was 169,700.

SUMMARY OF FINDINGS: Australian Capital Territory *continued*

AGE

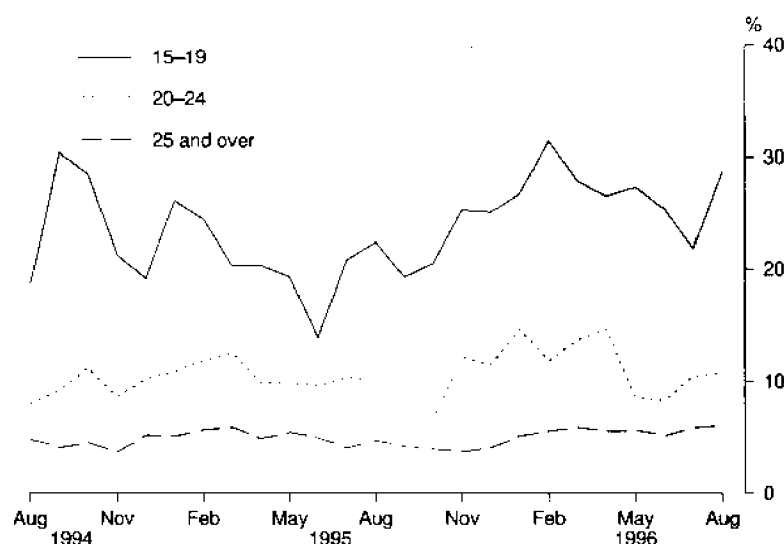
In August 1996 the unemployment rate in the ACT was highest (28.7%) for people aged 15–19 years. The rate was 10.8% for people aged 20–24 years and 6.1% for those age 25 years and over.

Eighty per cent of employed 15–19 year olds were working part-time, while about half of the unemployed in this age group were looking for part-time work. People aged 15–19 years who worked or wanted to work full-time, were only a small proportion of this age group. Within this small group, the unemployment rate for those looking for full-time work was 50.0%.

Of the employed 20–24 year olds, 70% worked full-time which compared with 80% of people aged 25 years and over. On average 20–24 year olds worked 32 hours per week and those aged 25 years and over worked 36 hours per week, compared with 16 hours per week for those aged 15–19 years.

The labour force participation rate was 59.0% for those aged 15–19 years, 80.4% for those aged 20–24 years and 72.0% for those aged 25 years and over.

Unemployment rate by age



INDUSTRY AND OCCUPATION

Note: From August 1996, occupation data are classified to the Australian Standard Classification of Occupations, Second Edition.

In August 1996, one-quarter of all employed people in the ACT were employed in *Government administration and defence*, 13% were in *Retail trade* and 12% in *Property and business services*.

The largest occupation groups were *Professionals* with 24% of employed people and *Intermediate clerical, sales and service workers* with 21% of the total. *Professionals* were the largest group for males with 24% and *Intermediate clerical, sales and service workers* for females with 31%.

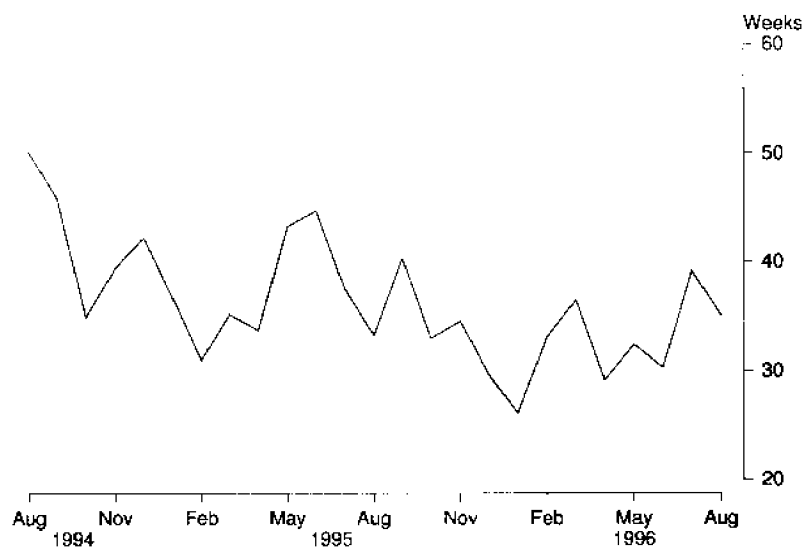
SUMMARY OF FINDINGS: Australian Capital Territory *continued*

DURATION OF UNEMPLOYMENT

In August 1996 the average duration of unemployment in the ACT was 35 weeks. The average was 22 weeks for 15–19 year olds, 16 weeks for 20–24 year olds and 48 weeks for those aged 25 years and over.

The long term unemployed (people unemployed 52 weeks and over) represented 22% of all unemployed people in August 1996. This compared with 21% a year earlier.

Average duration of unemployment



LIST OF TABLES AND GRAPHS

Page

NEW SOUTH WALES

Tables

Labour force status:

1	Original series	15
2	Seasonally adjusted and trend series	16
3	Age, August 1996	18
4	Persons aged 15-24 by full-time educational attendance, August 1996	19
5	Family status, August 1996	20

Graphs

Labour force status:

Trend series, August 1984-August 1996—

Employed males	17
Employed females	17
Unemployed males	17
Unemployed females	17
Male unemployment rate	17
Female unemployment rate	17
Male participation rate	17
Female participation rate	17

Persons aged 15-19 in the labour force: Full-time attendance at school or a tertiary educational institution, August 1994-August 1996—

Employed	18
Unemployed	18

Tables

Employed persons:

6	Status in employment	20
7	Age	21
8	Industry, August 1996	22
9	Occupation, August 1996	24

Graphs

Employed persons:

Annual change in employment by age, August 1995-August 1996	21
Employment by industry division, August 1996	23
Employment by occupation group, August 1996	25

LIST OF TABLES AND GRAPHS *continued*

Page

Tables

Unemployed persons:

10	Age	26
11	Unemployment rate by age	26
12	Industry and occupation of last full-time job, August 1996	27
13	Duration of unemployment	28
14	Unemployment rate by birthplace and period of arrival	28
15	Duration of unemployment by age	29

Graphs

Unemployment rate:

Unemployment rate by age, August 1994–August 1996	27
Unemployment rate by period of arrival of overseas born, August 1996	28

Tables

Regional data:

Labour force status—

16	Sydney Major Statistical Region	30
17	Balance of NSW Major Statistical Region	31
18	Regions of NSW	32

Employed persons:

19	Industry and occupation, Sydney Major Statistical Region and Balance of NSW Major Statistical Region, August 1996	40
----	--	----

LIST OF TABLES AND GRAPHS *continued*

Page

AUSTRALIAN CAPITAL TERRITORY

Tables

Labour force status:

20	Original series	41
21	Trend series	42
22	Age, August 1996	44
23	Non-institutionalised persons, birthplace and year of arrival, August 1996 ..	44

Graphs

Labour force status:

Trend series, August 1984–August 1996—

Employed males	43
Employed females	43
Unemployed males	43
Unemployed females	43
Male unemployment rate	43
Female unemployment rate	43
Male participation rate	43
Female participation rate	43

Tables

Employed persons:

24	Employed persons: industry and occupation, August 1996	45
----	--	----

Graphs

Employed persons:

Employed persons: industry division, August 1996	45
--	----

Tables

Unemployed persons:

25	Long-term unemployment	46
----	------------------------------	----

Graphs

Unemployment rate:

Long-term unemployed as a proportion of total unemployed	46
--	----

TABLE 1. LABOUR FORCE STATUS: ORIGINAL SERIES, NSW

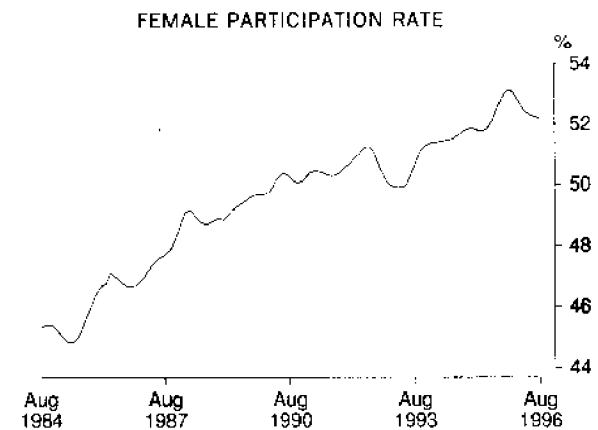
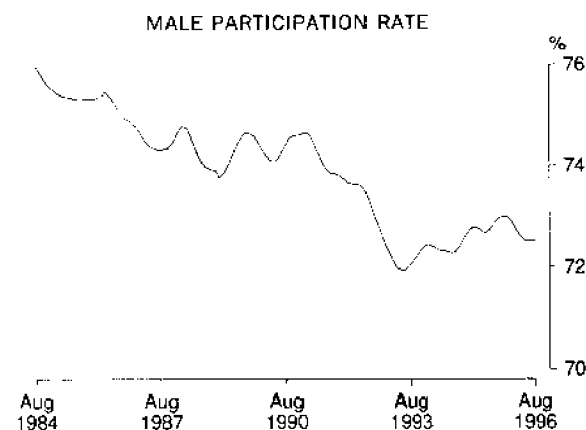
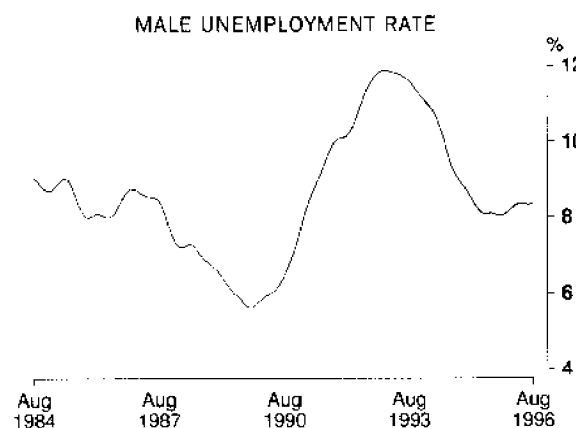
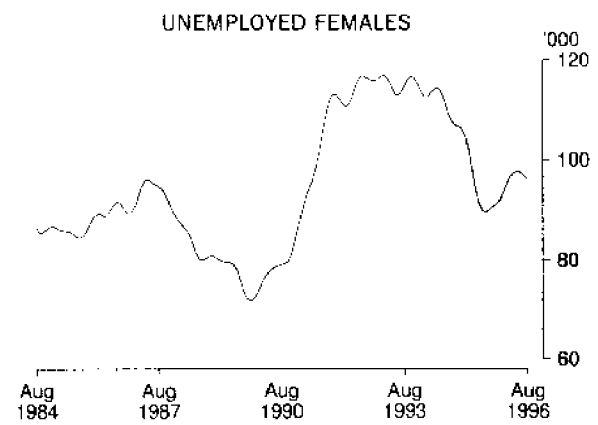
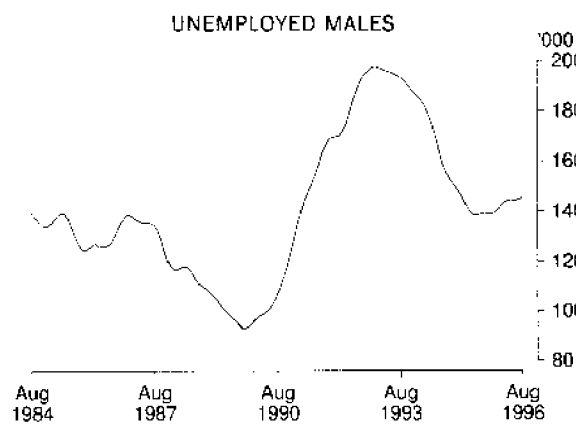
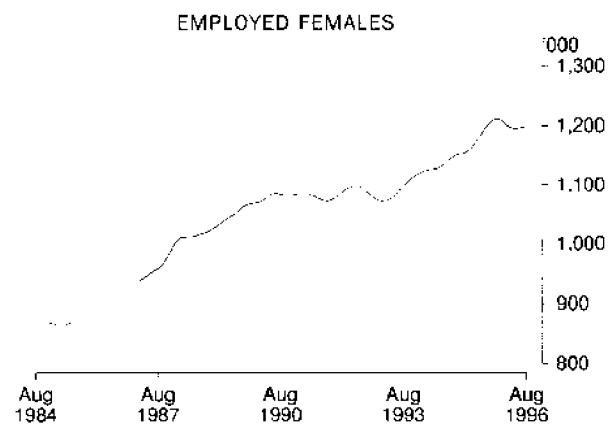
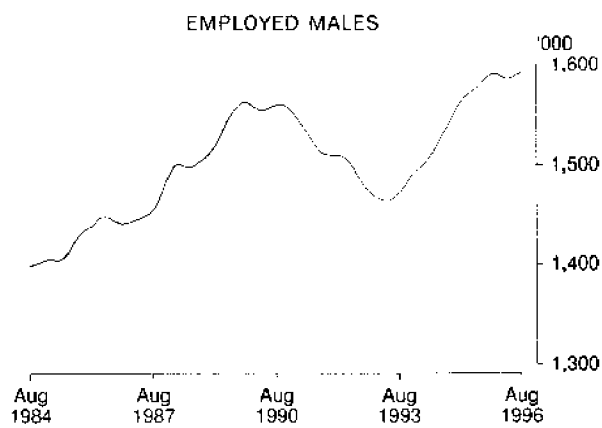
Month	Employed		Unemployed			Labour force ('000)	Not in labour force ('000)	Civilian population aged 15 and over ('000)	Unemployment rate (per cent)	Participation rate (per cent)	
	Full-time workers ('000)	Part-time workers ('000)	Total ('000)	Looking for full-time work ('000)	Looking for part-time work ('000)						
MALES											
August—											
1992	1,334.4	146.5	1,480.9	175.6	14.1	189.7	1,670.6	619.7	2,290.3	11.4	72.9
1993	1,315.7	137.2	1,453.0	173.0	16.3	189.4	1,642.3	667.9	2,310.2	11.5	71.1
1994	1,346.4	173.4	1,519.8	141.4	12.4	153.8	1,673.6	659.4	2,333.0	9.2	71.7
1995—											
June	1,411.4	164.0	1,575.4	122.1	12.0	134.2	1,709.6	647.6	2,357.2	7.8	72.5
July	1,430.7	151.2	1,582.0	117.3	13.6	131.0	1,713.0	646.4	2,359.4	7.6	72.6
August	1,403.0	167.7	1,570.8	122.3	12.2	134.5	1,705.2	656.3	2,361.6	7.9	72.2
1996—											
May	1,408.5	184.3	1,592.8	118.4	18.6	137.0	1,729.8	656.4	2,386.2	7.9	72.5
June	1,404.2	184.5	1,588.7	119.5	19.1	138.6	1,727.4	661.9	2,389.3	8.0	72.3
July	1,421.9	173.5	1,595.4	115.8	16.9	132.8	1,728.2	664.4	2,392.5	7.7	72.2
August	1,402.2	185.3	1,587.5	128.7	19.1	147.8	1,735.4	660.4	2,395.8	8.5	72.4
MARRIED FEMALES											
August—											
1992	349.9	313.3	663.3	29.1	12.6	41.8	705.0	648.0	1,353.1	5.9	52.1
1993	358.1	297.0	655.1	30.7	14.7	45.5	700.6	640.5	1,341.1	6.5	52.2
1994	385.3	292.3	677.6	26.4	12.0	38.4	716.0	667.5	1,383.5	5.4	51.8
1995—											
June	406.0	332.7	738.7	23.9	11.2	35.1	773.7	646.6	1,420.3	4.5	54.5
July	410.8	322.6	733.4	21.0	8.7	29.7	763.1	645.2	1,408.3	3.9	54.2
August	410.1	311.5	721.6	25.3	11.8	37.1	758.7	641.0	1,399.7	4.9	54.2
1996—											
May	391.5	322.4	713.9	23.7	14.2	37.9	751.9	670.1	1,421.9	5.0	52.9
June	395.9	327.1	723.0	23.9	14.6	38.4	761.4	655.9	1,417.3	5.0	53.7
July	404.1	312.0	716.1	25.7	11.4	37.1	753.2	665.0	1,418.2	4.9	53.1
August	400.9	315.3	716.2	22.4	14.1	36.5	752.7	665.2	1,417.9	4.9	53.1
ALL FEMALES											
August—											
1992	638.9	453.0	1,091.9	82.4	31.2	113.6	1,205.5	1,165.0	2,370.5	9.4	50.9
1993	654.3	437.5	1,091.8	78.8	30.5	109.3	1,201.1	1,191.5	2,392.6	9.1	50.2
1994	676.3	438.3	1,114.6	74.8	26.5	101.4	1,215.9	1,202.1	2,418.0	8.3	50.3
1995—											
June	706.8	486.7	1,193.5	58.9	25.9	84.8	1,278.3	1,161.9	2,440.2	6.6	52.4
July	714.0	474.4	1,188.4	59.1	21.1	80.2	1,268.6	1,173.9	2,442.5	6.3	51.9
August	708.8	471.9	1,180.7	59.8	32.4	92.2	1,272.9	1,171.8	2,444.7	7.2	52.1
1996—											
May	702.2	490.5	1,192.7	62.1	32.8	94.9	1,287.7	1,183.2	2,470.9	7.4	52.1
June	712.0	496.0	1,208.0	55.2	31.6	86.8	1,294.8	1,179.6	2,474.4	6.7	52.3
July	731.5	473.8	1,205.3	62.5	28.4	90.9	1,296.2	1,182.1	2,478.3	7.0	52.3
August	720.7	472.3	1,193.0	60.0	30.3	90.2	1,283.3	1,199.0	2,482.3	7.0	51.7
PERSONS											
August—											
1992	1,973.3	599.5	2,572.8	258.0	45.3	303.3	2,876.1	1,784.7	4,660.8	10.5	61.7
1993	1,970.1	574.7	2,544.8	251.8	46.9	298.7	2,843.5	1,859.4	4,702.9	10.5	60.5
1994	2,022.7	611.7	2,634.4	216.2	38.9	255.1	2,889.5	1,861.6	4,751.1	8.8	60.8
1995—											
June	2,118.3	650.7	2,769.0	181.0	38.0	219.0	2,988.0	1,809.5	4,797.4	7.3	62.3
July	2,144.7	625.7	2,770.4	176.4	34.7	211.1	2,981.5	1,820.3	4,801.8	7.1	62.1
August	2,111.8	639.6	2,751.5	182.1	44.6	226.6	2,978.1	1,828.2	4,806.3	7.6	62.0
1996—											
May	2,110.8	674.8	2,785.6	180.5	51.4	231.9	3,017.4	1,839.6	4,857.0	7.7	62.1
June	2,116.3	680.5	2,796.8	174.7	50.7	225.4	3,022.2	1,841.5	4,863.7	7.5	62.1
July	2,153.4	647.3	2,800.7	178.4	45.3	223.7	3,024.4	1,846.5	4,870.9	7.4	62.1
August	2,123.0	657.6	2,780.5	188.7	49.4	238.1	3,018.6	1,859.5	4,878.1	7.9	61.9

TABLE 2. LABOUR FORCE STATUS: SEASONALLY ADJUSTED AND TREND SERIES, NSW

Month	Seasonally adjusted series					Trend series (a)				
	Employed (<i>'000</i>)	Unemp- loyed (<i>'000</i>)	Labour force (<i>'000</i>)	Unemp- loyment rate (per cent)	Partici- pation rate (per cent)	Employed (<i>'000</i>)	Unemp- loyed (<i>'000</i>)	Labour force (<i>'000</i>)	Unemp- loyment rate (per cent)	Partici- pation rate (per cent)
MALES										
August—										
1992	1,490.4	194.3	1,684.7	11.5	73.6	1,488.3	191.1	1,679.4	11.4	73.3
1993	1,461.9	194.4	1,656.3	11.7	71.7	1,471.5	193.6	1,665.1	11.6	72.1
1994	1,528.8	158.4	1,687.2	9.4	72.3	1,525.5	161.0	1,686.5	9.5	72.3
1995—										
June	1,577.0	136.8	1,713.9	8.0	72.7	1,574.8	138.7	1,713.4	8.1	72.7
July	1,575.1	137.9	1,713.1	8.1	72.6	1,577.4	138.9	1,716.3	8.1	72.7
August	1,580.1	138.8	1,718.9	8.1	72.8	1,580.5	139.4	1,719.9	8.1	72.8
September	1,587.7	142.6	1,730.3	8.2	73.2	1,583.9	139.5	1,723.5	8.1	72.9
October	1,578.5	140.8	1,719.3	8.2	72.7	1,587.4	139.3	1,726.7	8.1	73.0
November	1,594.0	142.8	1,736.8	8.2	73.3	1,590.1	139.2	1,729.3	8.1	73.0
December	1,595.2	129.1	1,724.4	7.5	72.7	1,591.1	139.8	1,730.9	8.1	73.0
1996—										
January	1,591.2	144.7	1,735.9	8.3	73.1	1,590.5	141.1	1,731.7	8.1	72.9
February	1,592.9	139.3	1,732.2	8.0	72.9	1,588.7	142.6	1,731.3	8.2	72.8
March	1,582.9	148.4	1,731.3	8.6	72.7	1,586.9	143.9	1,730.7	8.3	72.7
April	1,576.7	151.0	1,727.7	8.7	72.5	1,586.0	144.5	1,730.5	8.4	72.6
May	1,591.0	140.8	1,731.7	8.1	72.6	1,586.7	144.6	1,731.3	8.4	72.6
June	1,590.3	141.2	1,731.5	8.2	72.5	1,588.4	144.6	1,733.0	8.3	72.5
July	1,588.6	139.8	1,728.4	8.1	72.2	1,590.6	144.7	1,735.2	8.3	72.5
August	1,597.1	152.8	1,749.8	8.7	73.0	1,592.6	145.4	1,738.0	8.4	72.5
FEMALES										
August—										
1992	1,100.7	120.3	1,221.0	9.9	51.5	1,094.8	117.0	1,211.8	9.7	51.1
1993	1,100.3	115.6	1,215.9	9.5	50.8	1,096.4	114.7	1,211.1	9.5	50.6
1994	1,123.0	106.9	1,229.8	8.7	50.9	1,135.0	111.7	1,246.6	9.0	51.6
1995—										
June	1,189.9	89.2	1,279.2	7.0	52.4	1,177.6	91.3	1,268.9	7.2	52.0
July	1,182.5	86.8	1,269.3	6.8	52.0	1,186.4	89.9	1,276.2	7.0	52.3
August	1,189.6	97.2	1,286.8	7.6	52.6	1,194.8	89.7	1,284.5	7.0	52.5
September	1,200.3	85.5	1,285.8	6.7	52.5	1,201.7	90.2	1,292.0	7.0	52.8
October	1,211.7	88.6	1,300.3	6.8	53.1	1,207.1	90.7	1,297.8	7.0	53.0
November	1,214.1	98.4	1,312.5	7.5	53.5	1,210.5	91.2	1,301.7	7.0	53.1
December	1,212.0	89.2	1,301.2	6.9	53.0	1,210.8	92.2	1,302.9	7.1	53.1
1996—										
January	1,207.1	90.9	1,298.0	7.0	52.8	1,208.0	93.6	1,301.6	7.2	53.0
February	1,198.3	95.1	1,293.3	7.4	52.6	1,203.2	95.3	1,298.5	7.3	52.8
March	1,212.0	95.6	1,307.6	7.3	53.1	1,198.6	96.7	1,295.4	7.5	52.6
April	1,184.7	102.7	1,287.3	8.0	52.2	1,195.9	97.5	1,293.5	7.5	52.4
May	1,183.7	101.0	1,284.7	7.9	52.0	1,195.2	97.9	1,293.1	7.6	52.3
June	1,204.3	91.2	1,295.5	7.0	52.4	1,195.8	97.6	1,293.4	7.5	52.3
July	1,199.5	98.6	1,298.1	7.6	52.4	1,197.2	97.0	1,294.2	7.5	52.2
August	1,202.0	95.1	1,297.1	7.3	52.3	1,199.0	96.2	1,295.2	7.4	52.2
PERSONS										
August—										
1992	2,591.1	314.6	2,905.7	10.8	62.3	2,583.1	308.1	2,891.2	10.7	62.0
1993	2,562.1	310.1	2,872.2	10.8	61.1	2,567.9	308.3	2,876.2	10.7	61.2
1994	2,651.8	265.3	2,917.0	9.1	61.4	2,660.4	272.7	2,933.1	9.3	61.7
1995—										
June	2,767.0	226.1	2,993.0	7.6	62.4	2,752.4	229.9	2,982.3	7.7	62.2
July	2,757.7	224.7	2,982.4	7.5	62.1	2,763.8	228.8	2,992.5	7.6	62.3
August	2,769.7	236.0	3,005.7	7.9	62.5	2,775.4	229.1	3,004.4	7.6	62.5
September	2,788.0	228.1	3,016.1	7.6	62.7	2,785.7	229.8	3,015.4	7.6	62.7
October	2,790.2	229.5	3,019.6	7.6	62.7	2,794.5	230.0	3,024.4	7.6	62.8
November	2,808.1	241.2	3,049.2	7.9	63.3	2,800.5	230.4	3,030.9	7.6	62.9
December	2,807.3	218.3	3,025.6	7.2	62.7	2,801.9	232.0	3,033.9	7.6	62.9
1996—										
January	2,798.3	235.7	3,033.9	7.8	62.8	2,798.6	234.7	3,033.3	7.7	62.8
February	2,791.2	234.4	3,025.6	7.7	62.5	2,791.9	237.9	3,029.8	7.9	62.6
March	2,794.9	244.0	3,038.9	8.0	62.7	2,785.5	240.6	3,026.1	8.0	62.5
April	2,761.3	253.7	3,015.0	8.4	62.2	2,781.9	242.1	3,024.0	8.0	62.3
May	2,774.6	241.8	3,016.4	8.0	62.1	2,781.9	242.5	3,024.4	8.0	62.3
June	2,794.6	232.4	3,027.0	7.7	62.2	2,784.3	242.1	3,026.4	8.0	62.2
July	2,788.1	238.5	3,026.6	7.9	62.1	2,787.8	241.6	3,029.4	8.0	62.2
August	2,799.1	247.9	3,046.9	8.1	62.5	2,791.7	241.6	3,033.3	8.0	62.2

(a) See Explanatory Note 28.

TREND SERIES, NSW (a)



(a) Comparisons between these graphs should not be made, as their vertical axes are not similarly scaled.

TABLE 3. LABOUR FORCE STATUS: AGE, NSW, AUGUST 1996

Age group (years)	Employed			Unemployed			Labour force (^{'000})	Not in labour force (^{'000})	Civilian population aged 15 and over (^{'000})	Unemp- loyment rate (per cent)	Partici- pation rate (per cent)
	Full-time workers (^{'000})	Part-time workers (^{'000})	Total (^{'000})	Looking for full- time work (^{'000})	Looking for part- time work (^{'000})	Total (^{'000})					
MALES											
15-19	47.7	52.8	100.5	16.0	8.7	24.7	125.2	91.0	216.1	19.7	57.9
20-24	146.3	33.9	180.2	20.5	* 0.9	21.4	201.6	31.9	233.5	10.6	86.3
25-34	383.0	23.4	406.5	32.9	* 4.0	36.9	443.3	32.5	475.8	8.3	93.2
35-44	382.4	21.6	404.0	22.5	* 3.1	25.5	429.6	37.0	466.6	5.9	92.1
45-54	301.5	23.1	324.6	23.2	* 0.6	23.8	348.4	50.3	398.7	6.8	87.4
55-59	79.4	10.6	90.1	9.3	* 1.2	10.6	100.6	46.0	146.6	10.5	68.6
60-64	42.2	9.3	51.6	* 3.8	* 0.6	* 4.4	56.0	65.7	121.6	* 7.8	46.0
65 and over	19.7	10.4	30.1	* 0.6	* 0.0	* 0.6	30.6	306.1	336.7	* 1.8	9.1
Total	1,402.2	185.3	1,587.5	128.7	19.1	147.8	1,735.4	660.4	2,395.8	8.5	72.4
MARRIED FEMALES											
15-19	* 1.3	* 0.7	* 2.0	* 0.0	* 0.3	* 0.3	* 2.3	* 2.3	* 4.6	* 11.9	* 50.4
20-24	21.8	9.8	31.6	* 2.9	* 0.4	* 3.3	34.8	23.9	58.7	* 9.4	59.3
25-34	118.3	75.7	194.0	7.1	* 4.6	11.8	205.7	115.8	321.5	5.7	64.0
35-44	134.5	114.4	248.8	6.4	* 5.2	11.6	260.4	104.8	365.2	4.5	71.3
45-54	99.5	81.4	180.9	* 4.5	* 3.0	7.5	188.4	104.6	293.0	4.0	64.3
55-59	17.8	20.3	38.2	* 1.3	* 0.3	* 1.6	39.7	64.4	104.2	* 4.0	38.1
60-64	* 5.1	9.3	14.4	* 0.3	* 0.0	* 0.3	14.7	72.4	87.1	* 2.0	16.9
65 and over	* 2.6	* 3.7	6.3	* 0.0	* 0.3	* 0.3	6.6	177.0	183.6	* 4.4	3.6
Total	400.9	315.3	716.2	22.4	14.1	36.5	752.7	665.2	1,417.9	4.9	53.1
ALL FEMALES											
15-19	26.1	67.3	93.3	8.9	8.1	17.0	110.3	95.2	205.5	15.4	53.7
20-24	113.1	40.1	153.2	13.1	* 3.1	16.2	169.3	60.2	229.5	9.5	73.8
25-34	210.8	93.3	304.1	13.4	7.2	20.6	324.7	157.5	482.2	6.4	67.3
35-44	185.3	133.6	318.9	12.3	6.1	18.4	337.3	132.8	470.0	5.5	71.8
45-54	141.3	95.4	236.7	9.9	* 5.1	15.0	251.7	135.1	386.8	6.0	65.1
55-59	30.8	23.8	54.6	* 1.9	* 0.3	* 2.2	56.8	85.4	142.2	* 3.9	39.9
60-64	9.6	12.0	21.6	* 0.6	* 0.0	* 0.6	22.2	100.9	123.1	* 2.7	18.0
65 and over	* 3.8	6.9	10.7	* 0.0	* 0.3	* 0.3	11.0	431.9	442.9	* 2.6	2.5
Total	720.7	472.3	1,193.0	60.0	30.3	90.2	1,283.3	1,199.0	2,482.3	7.0	51.7
PERSONS											
15-19	73.7	120.1	193.8	24.8	16.8	41.6	235.5	186.2	421.7	17.7	55.8
20-24	259.4	74.0	333.4	33.6	* 4.0	37.6	371.0	92.1	463.0	10.1	80.1
25-34	593.8	116.7	710.6	46.3	11.2	57.5	768.1	190.0	958.1	7.5	80.2
35-44	567.7	155.2	722.9	34.7	9.2	43.9	766.8	169.8	936.6	5.7	81.9
45-54	442.8	118.5	561.3	33.1	5.8	38.8	600.1	185.4	785.5	6.5	76.4
55-59	110.2	34.4	144.7	11.2	* 1.6	12.8	157.4	131.4	288.8	8.1	54.5
60-64	51.8	21.3	73.2	* 4.4	* 0.6	* 5.0	78.1	166.6	244.7	* 6.4	31.9
65 and over	23.5	17.3	40.7	* 0.6	* 0.3	* 0.8	41.6	738.0	779.6	* 2.0	5.3
Total	2,123.0	657.6	2,780.5	188.7	49.4	238.1	3,018.6	1,859.5	4,878.1	7.9	61.9

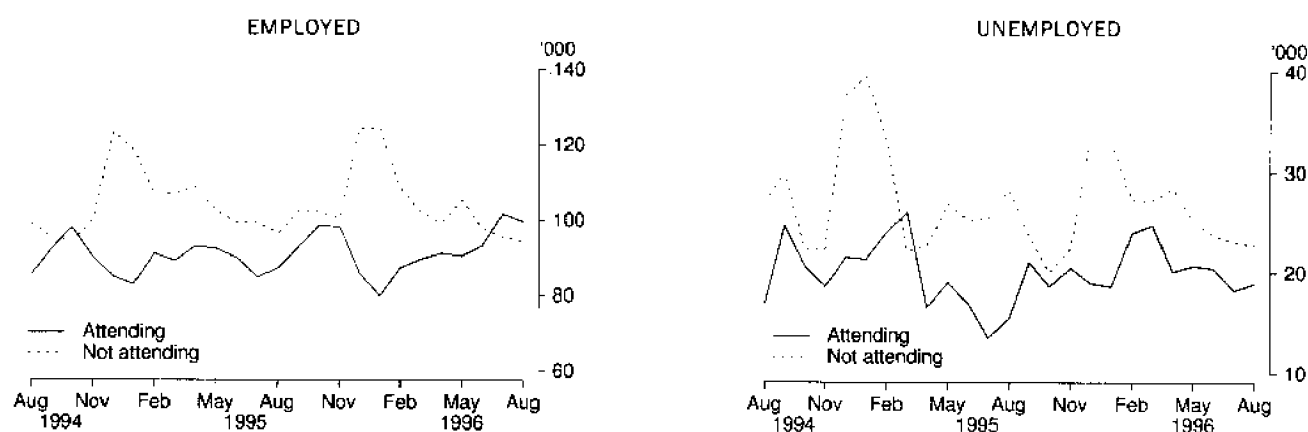
PERSONS AGED 15-19 IN THE LABOUR FORCE, NSW:
FULL-TIME ATTENDANCE AT SCHOOL OR A TERTIARY EDUCATIONAL INSTITUTION

TABLE 4. LABOUR FORCE STATUS: PERSONS AGED 15-24 BY FULL-TIME EDUCATIONAL ATTENDANCE, NSW, AUGUST 1996

Age (years)	Employed			Unemployed			Labour force ('000)	Not in labour force ('000)	Civilian population aged 15 and over ('000)	Unemployment rate (per cent)	Participation rate (per cent)
	Full-time workers ('000)	Part-time workers ('000)	Total ('000)	Looking for full-time work ('000)	Looking for part-time work ('000)	Total ('000)					
ATTENDING SCHOOL OR A TERTIARY EDUCATIONAL INSTITUTION FULL-TIME											
15-19	* 2.7	96.9	99.5	* 3.3	15.6	18.9	118.5	170.8	289.3	16.0	40.9
15	* 0.0	19.7	19.7	* 0.9	5.7	6.7	26.4	55.8	82.2	25.3	32.1
16	* 0.0	26.3	26.3	* 0.6	* 5.2	5.7	32.1	38.7	70.8	17.9	45.3
17	* 0.4	22.1	22.6	* 0.6	* 2.1	* 2.6	25.2	38.8	64.0	* 10.5	39.3
18	* 1.3	17.3	18.6	* 1.3	* 1.1	* 2.3	21.0	21.4	42.4	* 11.2	49.5
19	* 1.0	11.3	12.3	* 0.0	* 1.5	* 1.5	13.8	16.1	29.9	* 11.0	46.2
20-24	* 1.7	29.2	30.9	* 1.2	* 3.3	* 4.5	35.4	39.6	75.0	* 12.6	47.2
20	* 1.0	12.0	13.0	* 0.4	* 0.6	* 1.0	14.0	11.5	25.5	* 7.3	55.0
21	* 0.0	7.1	7.1	* 0.0	* 2.0	* 2.0	9.1	10.2	19.3	* 22.3	47.1
22	* 0.0	* 4.3	* 4.3	* 0.8	* 0.0	* 0.8	* 5.0	8.7	13.7	* 15.3	* 36.8
23	* 0.0	* 2.9	* 2.9	* 0.0	* 0.3	* 0.3	* 3.2	5.6	8.8	* 9.7	* 36.5
24	* 0.7	* 3.0	* 3.7	* 0.0	* 0.3	* 0.3	* 4.0	* 3.7	7.7	* 8.0	* 52.1
Total aged 15-24	* 4.4	126.1	130.5	* 4.5	18.9	23.4	153.8	210.5	364.3	15.2	42.2
NOT ATTENDING SCHOOL OR A TERTIARY EDUCATIONAL INSTITUTION FULL-TIME (a)											
15-19	71.0	23.2	94.3	21.5	* 1.2	22.7	117.0	15.4	132.4	19.4	88.4
15	* 1.0	* 0.6	* 1.6	* 0.6	* 0.4	* 1.0	* 2.6	* 1.1	* 3.7	* 37.9	* 69.8
16	5.3	* 3.3	8.7	* 2.7	* 0.3	* 3.0	11.7	* 1.4	13.1	* 25.8	89.2
17	11.0	* 0.9	11.8	* 4.9	* 0.0	* 4.9	16.7	* 3.1	19.9	* 29.3	84.2
18	21.8	8.9	30.7	6.7	* 0.0	6.7	37.4	* 3.8	41.2	18.0	90.8
19	32.0	9.5	41.5	6.5	* 0.6	7.1	48.6	5.9	54.4	14.6	89.2
20-24	257.7	44.7	302.5	32.4	* 0.7	33.1	335.6	52.4	388.0	9.9	86.5
20	36.8	7.8	44.5	7.1	* 0.7	7.8	52.3	7.8	60.1	14.9	87.0
21	41.1	9.0	50.1	8.7	* 0.0	8.7	58.7	11.1	69.8	14.7	84.1
22	51.8	8.8	60.5	7.4	* 0.0	7.4	67.9	10.7	78.6	10.9	86.4
23	58.0	12.0	70.0	6.2	* 0.0	6.2	76.1	10.6	86.7	8.1	87.8
24	70.1	7.3	77.4	* 3.2	* 0.0	* 3.2	80.5	12.2	92.7	* 3.9	86.8
Total aged 15-24	328.8	68.0	396.8	53.9	* 1.9	55.9	452.6	67.8	520.4	12.3	87.0
TOTAL											
15-19	73.7	120.1	193.8	24.8	16.8	41.6	235.5	186.2	421.7	17.7	55.8
15	* 1.0	20.4	21.4	* 1.6	6.1	7.7	29.0	56.9	85.9	26.4	33.8
16	5.3	29.7	35.0	* 3.3	5.5	8.8	43.8	40.1	83.9	20.0	52.2
17	11.4	23.0	34.4	5.5	* 2.1	7.5	41.9	42.0	83.9	18.0	50.0
18	23.1	26.2	49.3	8.0	* 1.1	9.1	58.4	25.2	83.7	15.6	69.8
19	32.9	20.8	53.8	6.5	* 2.1	8.6	62.4	22.0	84.3	13.8	74.0
20-24	259.4	74.0	333.4	33.6	* 4.0	37.6	371.0	92.1	463.0	10.1	80.1
20	37.7	19.8	57.5	7.5	* 1.3	8.8	66.3	19.3	85.7	13.3	77.4
21	41.1	16.1	57.1	8.7	* 2.0	10.7	67.8	21.3	89.2	15.8	76.1
22	51.8	13.0	64.8	8.1	* 0.0	8.1	72.9	19.4	92.3	11.2	79.0
23	58.0	14.9	72.9	6.2	* 0.3	6.5	79.3	16.2	95.5	8.1	83.1
24	70.8	10.2	81.0	* 3.2	* 0.3	* 3.5	84.5	15.9	100.4	* 4.1	84.2
Total aged 15-24	333.1	194.1	527.2	58.4	20.8	79.2	606.4	278.3	884.7	13.1	68.5

(a) Includes institutionalised persons.

TABLE 5. LABOUR FORCE STATUS: FAMILY STATUS, NSW, AUGUST 1996

Family status	Employed			Unemployed			Labour force	Not in labour force	Civilian population aged 15 and over	Unemployment rate (per cent)	Participation rate (per cent)
	Full-time workers ('000)	Part-time workers ('000)	Total ('000)	Looking for full-time work ('000)	Looking for part-time work ('000)	Total ('000)					
<i>Member of a family</i>	1,708.1	571.6	2,279.7	142.7	42.4	185.2	2,464.8	1,375.8	3,840.7	7.5	64.2
Husband	921.7	67.3	989.0	56.9	* 5.3	62.2	1,051.1	340.9	1,392.0	5.9	75.5
With children aged 0-14 present	511.9	24.6	536.6	34.5	* 2.5	37.1	573.6	35.9	609.5	6.5	94.1
Without children aged 0-14 present	409.7	42.7	452.4	22.3	* 2.8	25.1	477.5	305.0	782.5	5.3	61.0
With dependants present	577.5	27.7	605.2	37.7	* 2.9	40.6	645.8	47.4	693.2	6.3	93.2
Without dependants present	344.2	39.6	383.8	19.2	* 2.4	21.6	405.4	293.5	698.9	5.3	58.0
Wife	387.8	302.2	690.0	21.8	14.1	35.9	725.9	636.3	1,362.3	5.0	53.3
With children aged 0-14 present	147.4	189.1	336.5	11.3	11.4	22.6	359.1	227.4	586.6	6.3	61.2
Without children aged 0-14 present	240.4	113.0	353.5	10.6	* 2.7	13.3	366.8	408.9	775.7	3.6	47.3
With dependants present	180.5	208.0	388.5	12.2	12.0	24.1	412.6	255.3	667.9	5.9	61.8
Without dependants present	207.3	94.2	301.5	9.7	* 2.1	11.8	313.3	381.0	694.3	3.8	45.1
Not-married male family head	18.6	* 3.4	22.0	* 4.4	* 0.9	5.3	27.3	16.8	44.1	19.5	61.9
With children aged 0-14 present	7.2	* 1.5	8.8	* 2.1	* 0.6	* 2.8	11.5	* 3.5	15.0	* 23.9	76.5
Without children aged 0-14 present	11.4	* 1.8	13.2	* 2.2	* 0.3	* 2.6	15.8	13.3	29.0	* 16.2	54.3
With dependants present	10.3	* 2.1	12.5	* 2.5	* 0.6	* 3.1	15.6	* 5.0	20.6	* 19.8	75.6
Without dependants present	8.3	* 1.2	9.5	* 1.9	* 0.3	* 2.2	11.7	11.8	23.5	* 18.9	49.9
Not-married female family head	53.1	29.3	82.3	11.5	* 3.9	15.3	97.7	119.6	217.3	15.7	45.0
With children aged 0-14 present	24.4	22.6	47.0	5.8	* 3.0	8.8	55.8	66.2	122.0	15.7	45.7
Without children aged 0-14 present	28.7	6.6	35.3	5.6	* 0.9	6.6	41.9	53.4	95.3	15.7	44.0
With dependants present	35.0	25.1	60.0	6.7	* 3.3	10.0	70.0	73.6	143.6	14.3	48.8
Without dependants present	18.1	* 4.2	22.3	* 4.7	* 0.6	5.3	27.7	46.0	73.7	19.3	37.5
Full-time student aged 15-24 (a)	* 3.6	113.7	117.4	* 2.7	16.7	19.4	136.8	168.5	305.2	14.2	44.8
Other child of family head	296.4	50.1	346.6	40.8	* 1.2	42.0	388.6	46.3	434.9	10.8	89.3
Other relative of family head	26.9	5.6	32.5	* 4.6	* 0.3	* 5.0	37.5	47.4	84.9	* 13.3	44.2
<i>Not a member of a family</i>	342.8	57.4	400.2	38.7	* 5.2	43.9	444.1	332.7	776.8	9.9	57.2
Living alone	154.9	29.3	184.2	18.5	* 2.5	21.0	205.2	273.3	478.5	10.2	42.9
Not living alone	187.9	28.1	216.0	20.2	* 2.7	22.9	238.9	59.4	298.3	9.6	80.1
<i>Not family coded</i>	72.1	28.6	100.7	7.3	* 1.7	9.0	109.7	150.9	260.6	8.2	42.1
Total	2,123.0	657.6	2,780.5	188.7	49.4	238.1	3,018.6	1,859.5	4,878.1	7.9	61.9

(a) Excludes persons aged 20-24 attending school.

TABLE 6. EMPLOYED PERSONS: STATUS IN EMPLOYMENT (a), NSW ('000)

Status in employment	Males			Females			Persons		
	August 1995	May 1996	August 1996	August 1995	May 1996	August 1996	August 1995	May 1996	August 1996
Employees	1,299.1	1,325.4	1,322.8	1,053.7	1,063.3	1,068.6	2,352.7	2,388.7	2,391.4
Employers	87.1	82.7	80.1	35.7	36.1	39.4	122.8	118.8	119.5
Own account workers	173.5	177.8	172.1	79.7	79.0	67.9	253.1	256.9	240.0
Total employed (b)	1,570.8	1,592.8	1,587.5	1,180.7	1,192.7	1,193.0	2,751.5	2,785.6	2,780.5

(a) Status in Employment replaces the previous term Status of Worker. No definitional changes have been made — the only changes are to the classification titles. (b) Includes contributing family workers.

TABLE 7. EMPLOYED PERSONS: AGE, NSW
(^{'000})

Month	Age group (years)								Total employed
	15-19	20-24	25-34	35-44	45-54	55-59	60-64	65 and over	
MALES									
1995—									
August	90.0	186.6	403.1	398.9	321.8	96.2	50.6	23.6	1,570.8
1996—									
May	98.2	182.0	405.6	405.3	327.0	88.5	52.4	33.8	1,592.8
June	93.5	178.3	410.5	406.3	325.5	90.0	52.6	32.1	1,588.7
July	96.6	187.3	409.5	405.7	323.5	89.3	54.1	29.3	1,595.4
August	100.5	180.2	406.5	404.0	324.6	90.1	51.6	30.1	1,587.5
MARRIED FEMALES									
1995—									
August	* 2.8	42.4	193.7	240.8	183.2	41.8	11.5	5.4	721.6
1996—									
May	* 2.7	27.8	193.7	250.2	182.7	34.9	15.5	6.4	713.9
June	* 2.9	31.6	190.5	253.1	185.1	36.0	15.9	7.9	723.0
July	* 2.3	34.6	190.7	250.7	181.5	36.3	14.2	5.7	716.1
August	* 2.0	31.6	194.0	248.8	180.9	38.2	14.4	6.3	716.2
ALL FEMALES									
1995—									
August	93.5	158.0	300.5	306.2	236.4	54.6	19.6	11.8	1,180.7
1996—									
May	97.4	159.3	302.7	316.0	233.9	48.7	23.6	11.1	1,192.7
June	97.5	159.3	302.4	322.4	238.3	51.6	23.2	13.5	1,208.0
July	100.3	162.6	300.1	320.4	235.6	54.0	22.0	10.3	1,205.3
August	93.3	153.2	304.1	318.9	236.7	54.6	21.6	10.7	1,193.0
PERSONS									
1995—									
August	183.5	344.6	703.6	705.0	558.2	150.8	70.2	35.4	2,751.5
1996—									
May	195.6	341.4	708.3	721.4	560.9	137.3	75.9	44.9	2,785.6
June	191.0	337.6	712.9	728.6	563.8	141.6	75.8	45.5	2,796.8
July	196.9	350.0	709.6	726.2	559.0	143.3	76.2	39.6	2,800.7
August	193.8	333.4	710.6	722.9	561.3	144.7	73.2	40.7	2,780.5

ANNUAL CHANGE IN EMPLOYMENT BY AGE, NSW, AUGUST 1995 TO AUGUST 1996

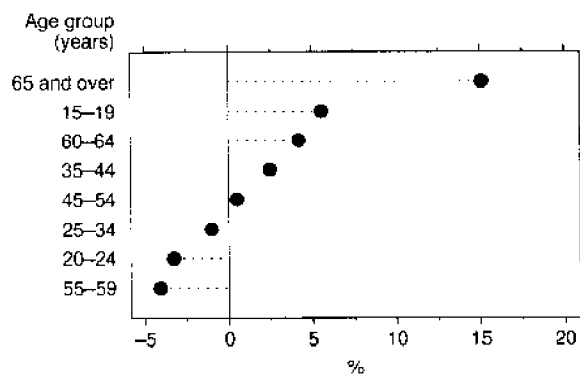
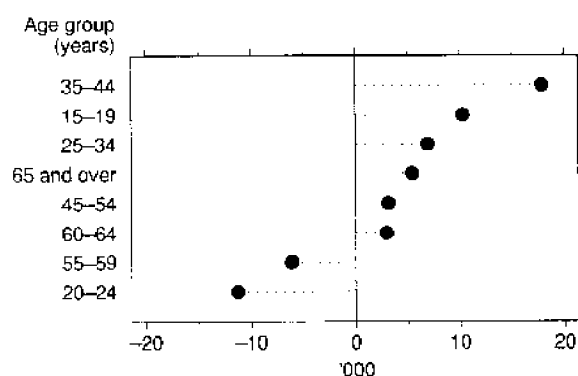


TABLE 8. EMPLOYED PERSONS: INDUSTRY (a), NSW, AUGUST 1996
(*000)

<i>Industry division and subdivision</i>	<i>Males</i>	<i>Females</i>	<i>Persons</i>
<i>Agriculture, forestry and fishing</i>	81.0	32.0	113.1
Agriculture	68.4	30.2	98.6
Services to agriculture; hunting and trapping	5.5	* 1.2	6.7
Forestry and logging	* 3.6	* 0.6	* 4.2
Commercial fishing	* 3.4	* 0.0	* 3.4
<i>Mining</i>	22.4	* 1.5	23.9
Coal mining	16.0	* 0.0	16.0
Oil and gas extraction	* 0.0	* 0.0	* 0.0
Metal ore mining	* 2.2	* 0.0	* 2.2
Other mining	* 3.6	* 0.3	* 3.9
Services to mining	* 0.6	* 1.2	* 1.8
<i>Manufacturing</i>	269.1	104.9	374.0
Food, beverage and tobacco manufacturing	36.6	16.4	53.0
Textile, clothing, footwear and leather manufacturing	12.0	22.4	34.3
Wood and paper product manufacturing	17.1	* 4.8	21.9
Printing, publishing and recorded media	27.2	20.4	47.6
Petroleum, coal, chemical and associated product manufacturing	25.9	9.8	35.8
Non-metallic mineral product manufacturing	14.2	* 1.5	15.7
Metal product manufacturing	59.3	6.8	66.0
Machinery and equipment manufacturing	57.9	19.4	77.3
Other manufacturing	19.0	* 3.4	22.4
<i>Electricity, gas and water supply</i>	20.1	* 5.1	25.1
Electricity and gas supply	13.5	* 3.3	16.9
Water supply, sewerage and drainage services	6.6	* 1.7	8.3
<i>Construction</i>	178.9	27.0	205.9
General construction	60.1	10.4	70.6
Construction trade services	118.7	16.6	135.3
<i>Wholesale trade</i>	118.3	60.3	178.6
Basic material wholesaling	24.4	7.7	32.0
Machinery and motor vehicle wholesaling	55.5	21.5	77.1
Personal and household good wholesaling	38.4	31.0	69.4
<i>Retail trade</i>	208.5	209.8	418.3
Food retailing	74.9	79.4	154.3
Personal and household good retailing	72.2	110.7	182.9
Motor vehicle retailing and services	61.4	19.7	81.1
<i>Accommodation, cafes and restaurants</i>	62.5	66.1	128.6
<i>Transport and storage</i>	107.1	33.2	140.4
Road transport	55.8	10.1	65.9
Rail transport	17.0	* 3.6	20.7
Water transport	* 5.0	* 0.6	5.5
Air and Space transport	12.5	8.0	20.5
Other transport	* 2.0	* 0.0	* 2.0
Services to transport	11.2	9.7	20.8
Storage	* 3.7	* 1.3	* 5.0
<i>Communication services</i>	38.1	18.1	56.1
<i>Finance and insurance</i>	59.6	72.2	131.8
Finance	31.0	45.6	76.6
Insurance	15.5	16.1	31.5
Services to finance and insurance	13.1	10.6	23.7
<i>Property and business services</i>	155.5	123.7	279.3
Property services	19.8	16.3	36.1
Business services	135.7	107.4	243.2
<i>Government administration and defence</i>	65.3	44.8	110.1
Government administration	61.2	42.3	103.6
Defence	* 4.1	* 2.4	6.5
<i>Education</i>	67.8	134.9	202.7
<i>Health and community services</i>	54.3	184.5	238.9
Health services	44.1	142.9	187.1
Community services	10.2	41.6	51.8
<i>Cultural and recreational services</i>	26.0	25.5	51.5
Motion picture, radio and television services	5.5	6.1	11.7
Libraries, museums and the arts	7.6	* 4.5	12.1
Sport and recreation	12.9	14.8	27.8
<i>Personal and other services</i>	52.9	49.4	102.3
Personal services	18.7	30.0	48.7
Other services	32.9	16.7	49.7
Private households employing staff	* 1.3	* 2.7	* 3.9
Total employed	1,587.5	1,193.0	2,780.5

(a) Industry data are now classified according to the Australian and New Zealand Standard Industrial Classification. See the Explanatory Notes for more details.

EMPLOYMENT BY INDUSTRY DIVISION, NSW, AUGUST 1996

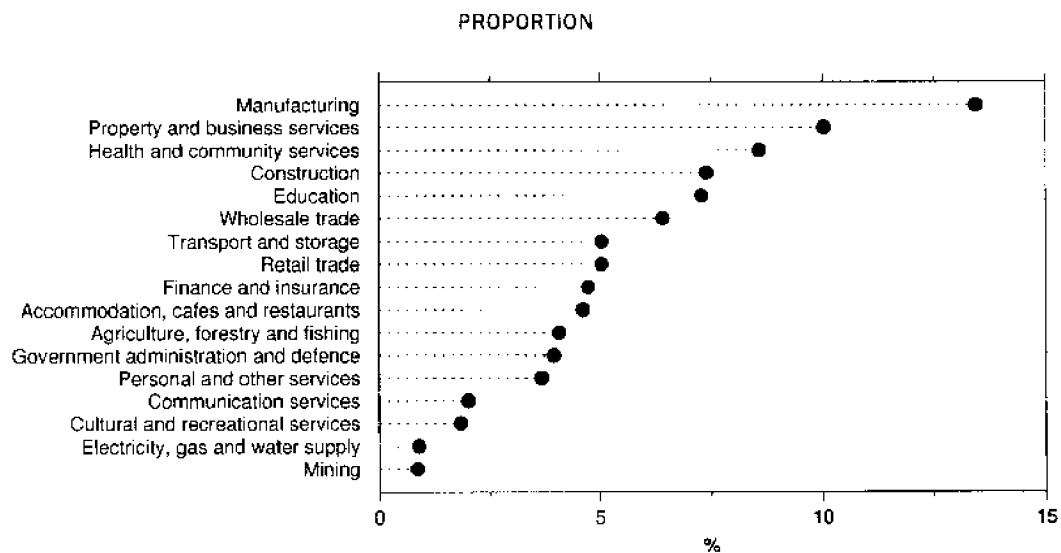
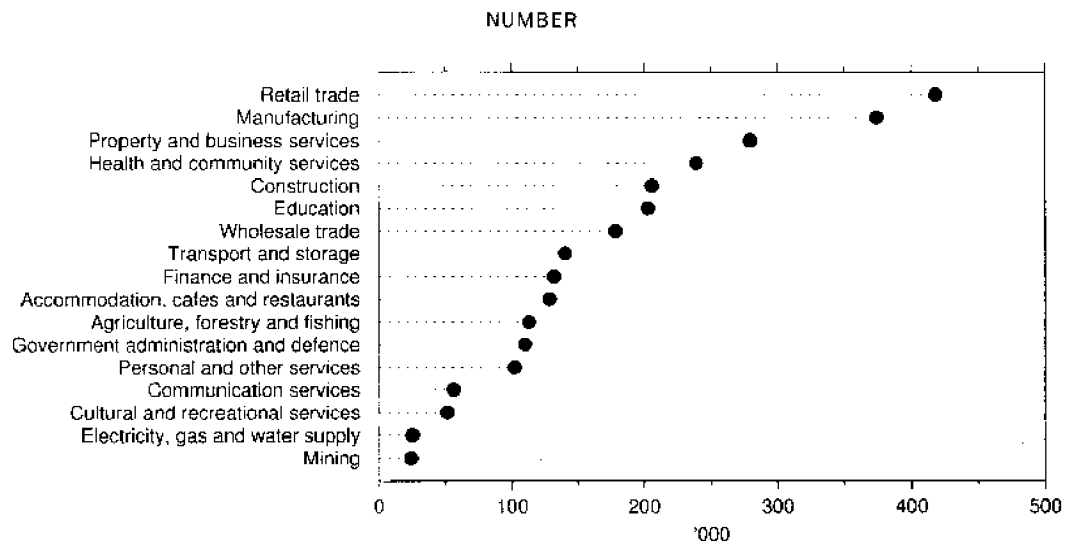


TABLE 9, EMPLOYED PERSONS: OCCUPATION (a), NSW, AUGUST 1996
(^{'000})

<i>Major and sub-major occupation group</i>	<i>Males</i>	<i>Females</i>	<i>Persons</i>
<i>Managers and administrators</i>	157.5	38.2	195.7
Generalist managers	50.6	* 3.9	54.5
Specialist managers	66.2	19.0	85.1
Farmers and farm managers	40.7	15.3	56.1
<i>Professionals</i>	246.0	252.6	498.6
Science, building and engineering professionals	40.3	9.9	50.1
Business and information professionals	92.4	42.4	134.8
Health professionals	22.9	72.0	95.0
Education professionals	46.0	90.5	136.5
Social, arts and miscellaneous professionals	44.4	37.8	82.2
<i>Associate professionals</i>	195.0	90.0	285.0
Science, engineering and related associate professionals	34.6	7.7	42.2
Business and administrative associate professionals	48.8	30.7	79.5
Managing supervisors (sales and service)	84.8	38.4	123.2
Health and welfare associate professionals	6.4	7.2	13.6
Other associate professionals	20.4	6.1	26.5
<i>Tradespersons and related workers</i>	335.2	32.6	367.8
Mechanical and fabrication engineering tradespersons	59.9	* 0.6	60.5
Automotive tradespersons	40.7	* 0.3	41.0
Electrical and electronics tradespersons	60.9	* 1.9	62.8
Construction tradespersons	85.3	* 0.3	85.6
Food tradespersons	24.5	7.0	31.5
Skilled agricultural and horticultural workers	21.1	* 1.3	22.4
Other tradespersons and related workers	42.7	21.3	64.0
<i>Advanced clerical and service workers</i>	14.0	146.8	160.7
Secretaries and personal assistants	* 1.3	95.0	96.4
Other advanced clerical and service workers	12.6	51.7	64.4
<i>Intermediate clerical, sales and service workers</i>	137.4	315.9	453.3
Intermediate clerical workers	67.6	203.9	271.5
Intermediate sales and related workers	37.1	16.2	53.3
Intermediate service workers	32.8	95.8	128.5
<i>Intermediate production and transport workers</i>	227.5	33.8	261.4
Intermediate plant operators	50.6	* 1.5	52.1
Intermediate machine operators	21.2	14.2	35.4
Road and rail transport drivers	82.3	* 5.2	87.5
Other intermediate production and transport workers	73.5	13.0	86.5
<i>Elementary clerical, sales and service workers</i>	107.6	189.9	297.5
Elementary clerks	15.1	20.6	35.7
Elementary sales workers	68.8	160.2	228.9
Elementary service workers	23.7	9.1	32.9
<i>Labourers and related workers</i>	167.2	93.3	260.5
Cleaners	26.6	32.5	59.1
Factory labourers	45.7	24.8	70.5
Other labourers and related workers	94.9	36.1	131.0
Total employed	1,587.5	1,193.0	2,780.5

(a) Occupation data are now classified according to the Second Edition of the Australian Standard Classification of Occupations (ASCO). See the Explanatory Notes for more details.

EMPLOYMENT BY OCCUPATION GROUP, NSW, AUGUST 1996

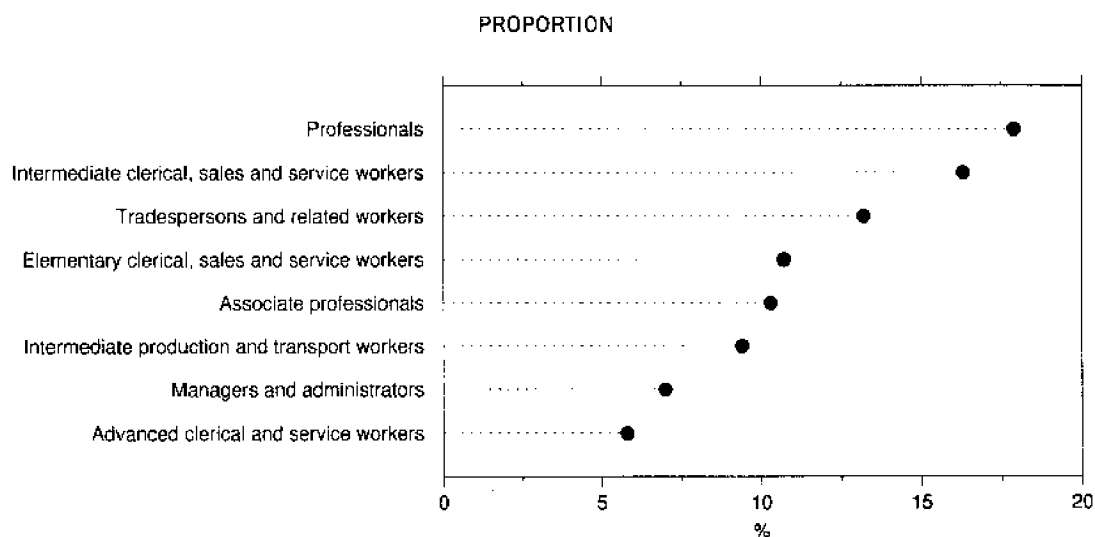
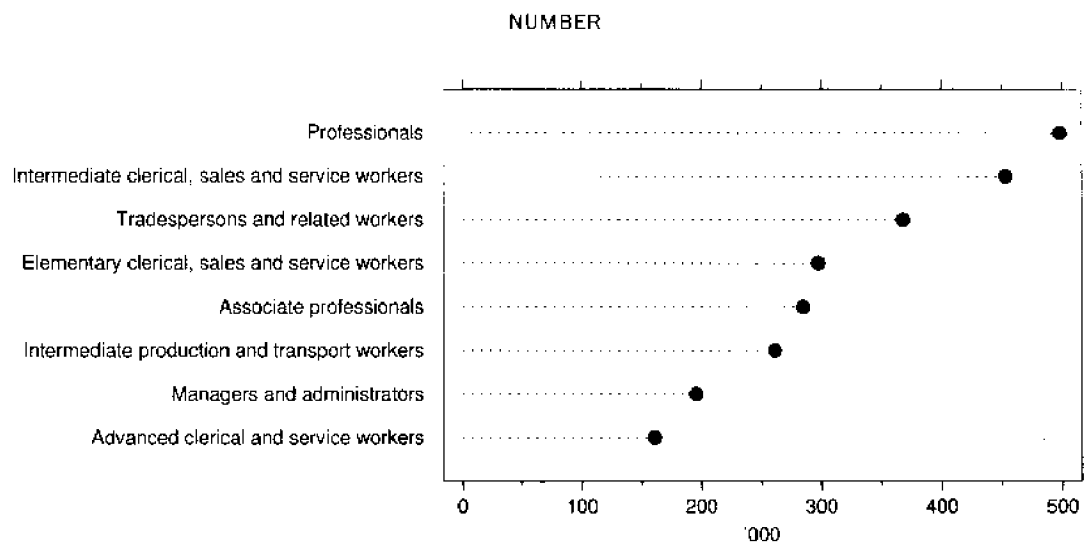


TABLE 10. UNEMPLOYED PERSONS: AGE, NSW
(^{'000})

Month	Age group (years)						Total unemployed
	15-19	20-24	25-34	35-44	45-54	55 and over	
MALES							
1995— August	23.9	23.6	34.6	26.7	14.4	11.4	134.5
1996— May	23.4	24.4	31.7	25.4	20.2	11.8	137.0
June	27.1	22.0	31.1	25.3	18.2	14.8	138.6
July	21.9	19.0	31.7	23.3	21.7	15.3	132.8
August	24.7	21.4	36.9	25.5	23.8	15.5	147.8
FEMALES							
1995— August	19.8	17.8	22.6	18.8	10.8	* 2.3	92.2
1996— May	22.5	18.1	19.2	18.0	13.6	* 3.6	94.9
June	17.0	14.3	19.4	19.1	12.7	* 4.3	86.8
July	19.3	15.3	23.7	15.2	15.0	* 2.4	90.9
August	17.0	16.2	20.6	18.4	15.0	* 3.1	90.2
PERSONS							
1995— August	43.7	41.5	57.1	45.5	25.2	13.7	226.6
1996— May	45.8	42.5	50.9	43.4	33.7	15.5	231.9
June	44.1	36.3	50.6	44.4	30.9	19.1	225.4
July	41.1	34.3	55.4	38.5	36.7	17.7	223.7
August	41.6	37.6	57.5	43.9	38.8	18.6	238.1

TABLE 11. UNEMPLOYED PERSONS: UNEMPLOYMENT RATE BY AGE, NSW
(per cent)

Month	Age group (years)						Total unemployment rate
	15-19	20-24	25-34	35-44	45-54	55 and over	
MALES							
1995— August	21.0	11.2	7.9	6.3	4.3	6.2	7.9
1996— May	19.2	11.8	7.3	5.9	5.8	6.3	7.9
June	22.5	11.0	7.0	5.9	5.3	7.8	8.0
July	18.5	9.2	7.2	5.4	6.3	8.1	7.7
August	19.7	10.6	8.3	5.9	6.8	8.3	8.5
FEMALES							
1995— August	17.5	10.1	7.0	5.8	4.4	* 2.6	7.2
1996— May	18.7	10.2	6.0	5.4	5.5	* 4.2	7.4
June	14.8	8.2	6.0	5.6	5.1	* 4.7	6.7
July	16.1	8.6	7.3	4.5	6.0	* 2.7	7.0
August	15.4	9.5	6.4	5.5	6.0	* 3.4	7.0
PERSONS							
1995— August	19.2	10.7	7.5	6.1	4.3	5.1	7.6
1996— May	19.0	11.1	6.7	5.7	5.7	5.7	7.7
June	18.8	9.7	6.6	5.7	5.2	6.8	7.5
July	17.3	8.9	7.2	5.0	6.2	6.4	7.4
August	17.7	10.1	7.5	5.7	6.5	6.7	7.9

TABLE 12. UNEMPLOYED PERSONS: INDUSTRY (a) AND OCCUPATION (b) OF LAST FULL-TIME JOB, NSW, AUGUST 1996
(^{'000})

	Males	Females	Persons
<i>Had worked for two weeks or more in a full-time job in the last two years</i>	81.4	30.3	111.7
Industry division			
Agriculture, forestry and fishing	* 4.4	* 0.6	* 5.1
Manufacturing	17.8	* 4.3	22.0
Construction	12.1	* 0.3	12.5
Wholesale trade	5.5	* 1.7	7.2
Retail trade	9.2	7.4	16.6
Accommodation, cafes and restaurants	* 3.6	* 2.7	6.3
Transport and storage	* 4.4	* 0.3	* 4.7
Finance and insurance	* 1.0	* 0.9	* 1.9
Property and business services	7.4	* 2.4	9.8
Education	* 1.2	* 1.0	* 2.1
Health and community services	* 2.7	* 4.4	7.1
Cultural and recreational services	* 1.7	* 0.3	* 2.0
Personal and other services	* 2.1	* 2.2	* 4.3
Other industries (c)	8.3	* 1.9	10.2
Major occupation group—			
Managers and administrators	* 2.5	* 0.0	* 2.5
Professionals	* 5.0	* 1.9	6.8
Associate professionals	* 5.1	* 2.2	7.3
Tradespersons and related workers	18.7	* 0.6	19.2
Advanced clerical and service workers	* 0.6	* 2.1	* 2.7
Intermediate clerical, sales and service workers	6.8	10.1	16.9
Intermediate production and transport workers	19.3	* 0.9	20.2
Elementary clerical, sales and service workers	5.3	6.5	11.8
Labourers and related workers	18.1	6.1	24.2
<i>Had not worked full-time for two weeks or more in the last two years</i>	62.5	55.9	118.4
Looking for first job	13.2	14.1	27.3
Had worked at some time in the past	49.3	41.8	91.1
<i>Stood down</i>	* 4.0	* 4.0	8.0
Total unemployed	147.8	90.2	238.1

(a) Industry data are now classified according to the Australian and New Zealand Standard Industrial Classification. See the Explanatory Notes for more details.

(b) Occupation data are now classified according to the Second Edition of the Australian Standard Classification of Occupations (ASCO). See the Explanatory Notes for more details. (c) Comprises Mining; Electricity, gas and water supply; Communication services; and Government administration and defence.

UNEMPLOYMENT RATE BY AGE, NSW

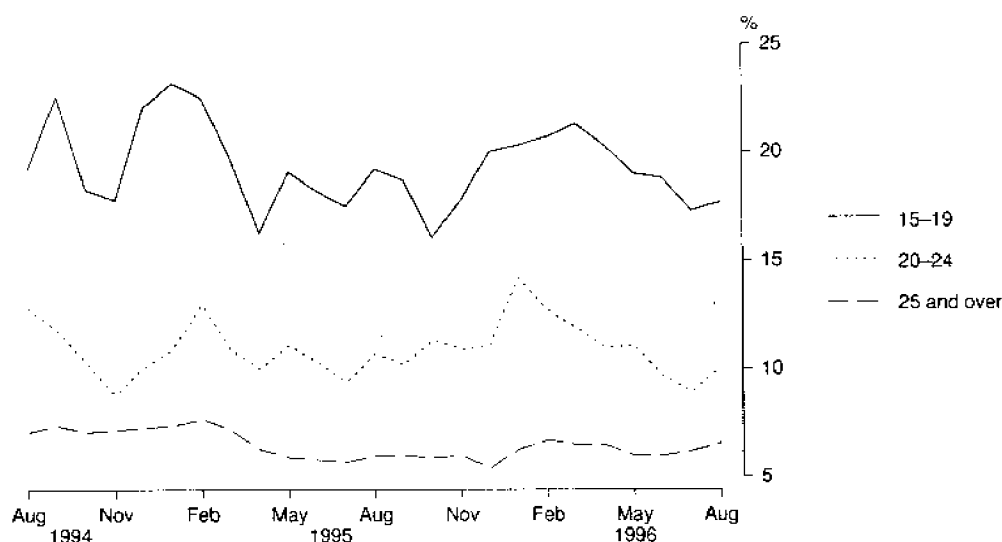


TABLE 13. UNEMPLOYED PERSONS: DURATION OF UNEMPLOYMENT, NSW

Duration of unemployment (weeks)	Males		Females		Persons				
	August 1995	August 1996	August 1995	August 1996	August 1995	May 1996	June 1996	July 1996	August 1996
— '000 —									
Under 52	83.0	100.4	66.8	67.4	149.8	163.5	158.2	156.1	167.9
Under 2	6.5	11.6	7.4	6.9	13.9	16.7	16.1	19.5	18.5
2 and under 4	9.2	12.0	9.5	8.6	18.7	16.1	18.7	24.5	20.6
4 and under 8	14.7	16.4	12.0	15.5	26.7	23.5	25.1	24.8	32.0
8 and under 13	11.4	13.6	7.2	7.3	18.6	23.1	17.1	20.3	20.9
13 and under 26	15.3	19.6	10.5	12.0	25.8	50.3	44.6	27.3	31.5
26 and under 39	21.2	21.5	17.5	13.1	38.7	23.9	27.3	34.4	34.6
39 and under 52	* 4.8	5.8	* 2.7	* 4.0	7.5	9.9	9.3	5.3	9.8
52 and over	51.4	47.4	25.4	22.8	76.8	68.3	67.2	67.5	70.2
52 and under 104	17.6	17.8	10.0	8.2	27.6	27.4	26.6	30.0	26.0
104 and over	33.8	29.6	15.4	14.6	49.2	41.0	40.6	37.5	44.2
Total unemployed	134.5	147.8	92.2	90.2	226.6	231.9	225.4	223.7	238.1
— Weeks —									
Average	65.7	62.5	49.4	47.9	59.1	58.6	53.0	55.0	57.0
Median	30	26	25	18	27	20	22	22	22

TABLE 14. UNEMPLOYED PERSONS: UNEMPLOYMENT RATE BY BIRTHPLACE AND PERIOD OF ARRIVAL, NSW (per cent)

	August 1995	May 1996	June 1996	July 1996	August 1996
Birthplace—					
Australia	6.8	7.2	6.6	6.8	7.3
Outside Australia	9.9	9.1	9.7	9.0	9.5
Main English speaking countries	5.3	4.9	4.8	4.3	5.9
Other countries	12.3	11.3	12.4	11.5	11.4
Period of arrival of overseas born—					
Before 1961	5.1	5.1	7.2	5.8	7.2
1961–1970	7.7	5.5	5.8	7.1	8.0
1971–1980	8.0	8.2	7.4	7.5	8.5
1981–1985	12.7	9.9	9.0	5.3	6.2
1986–1990	10.7	10.3	11.7	11.7	9.9
1991 to survey date	19.2	16.1	18.9	16.8	17.5
Total unemployment rate	7.6	7.7	7.5	7.4	7.9

UNEMPLOYMENT RATE BY PERIOD OF ARRIVAL OF OVERSEAS BORN, NSW, AUGUST 1996

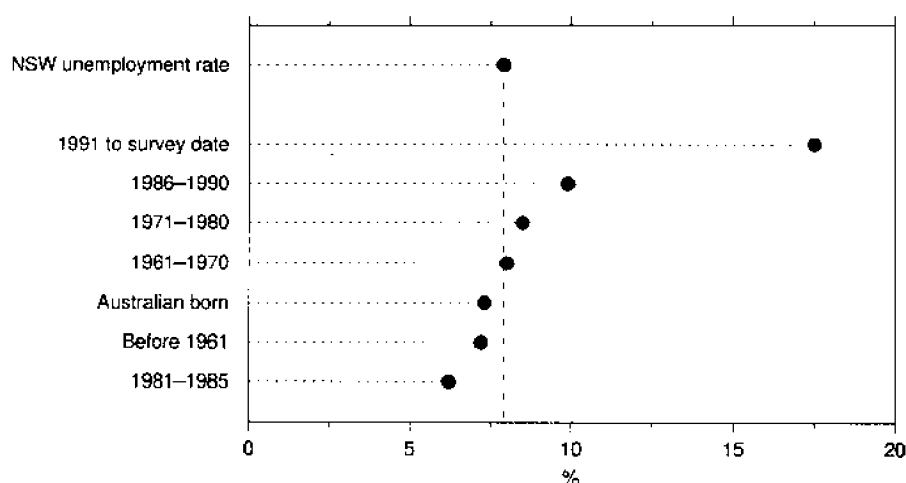


TABLE 15. UNEMPLOYED PERSONS: DURATION OF UNEMPLOYMENT BY AGE, NSW

Month	Duration of unemployment (weeks)					Total unemployed persons ('000)	Average duration (weeks)	Median duration (weeks)
	Under 13 ('000)	13 and under 26 ('000)	26 and under 39 ('000)	39 and under 104 ('000)	104 and over ('000)			
15-19								
1995— August	18.3	6.4	9.6	6.2	* 3.2	43.7	29.9	20
1996— June	19.4	10.5	5.6	6.5	* 2.2	44.1	25.9	16
July	18.8	* 4.5	11.8	* 4.7	* 1.4	41.1	21.8	13
August	20.7	7.1	7.3	* 5.0	* 1.5	41.6	22.4	13
20-24								
1995— August	15.6	* 4.6	6.0	7.8	7.5	41.5	46.5	26
1996— June	13.5	8.7	* 4.5	* 4.9	* 4.6	36.3	36.4	19
July	15.3	* 4.4	5.7	5.9	* 3.0	34.3	34.9	16
August	14.4	5.6	7.0	5.6	* 5.1	37.6	41.3	19
25-34								
1995— August	21.0	5.8	8.6	9.3	12.4	57.1	57.9	26
1996— June	15.6	9.3	7.9	9.8	8.0	50.6	45.2	26
July	23.6	9.1	5.5	10.8	6.4	55.4	45.8	17
August	25.6	6.4	8.2	8.3	9.0	57.5	50.5	18
35-44								
1995— August	14.2	* 4.1	9.2	6.0	11.9	45.5	65.7	31
1996— June	15.1	8.5	5.6	* 5.2	10.0	44.4	63.9	21
July	16.4	* 4.0	* 4.6	6.8	6.6	38.5	62.0	22
August	16.2	5.5	6.1	6.8	9.3	43.9	69.3	26
45 AND OVER								
1995— August	8.7	* 4.9	* 5.3	5.8	14.1	38.9	99.3	43
1996— June	13.5	7.6	* 3.8	9.4	15.8	50.1	87.0	43
July	14.9	* 5.2	6.8	7.2	20.1	54.3	97.1	39
August	15.0	6.9	6.1	10.2	19.3	57.4	89.4	43
TOTAL								
1995— August	77.8	25.8	38.7	35.1	49.2	226.6	59.1	27
1996— June	77.0	44.6	27.3	35.8	40.6	225.4	53.0	22
July	89.1	27.3	34.4	35.4	37.5	223.7	55.0	22
August	91.9	31.5	34.6	35.9	44.2	238.1	57.0	22

TABLE 16. LABOUR FORCE STATUS, SYDNEY (MSR)

Month	Employed			Unemployed			Labour force ('000)	Not in labour force ('000)	Civilian population aged 15 and over ('000)	Unemployment rate (per cent)	Participation rate (per cent)
	Full-time workers ('000)	Part-time workers ('000)	Total ('000)	Looking for full-time work ('000)	Looking for part-time work ('000)	Total ('000)					
MALES											
August—											
1992	856.3	90.0	946.4	103.2	10.9	114.1	1,060.4	379.3	1,439.7	10.8	73.7
1993	853.2	85.2	938.4	96.1	12.4	108.5	1,046.8	405.3	1,452.2	10.4	72.1
1994	880.6	111.8	992.4	80.6	9.1	89.7	1,082.2	384.0	1,466.2	8.3	73.8
1995—											
June	910.4	101.7	1,012.1	72.9	6.9	79.7	1,091.9	384.1	1,476.0	7.3	74.0
July	926.7	92.7	1,019.4	67.3	8.6	75.9	1,095.3	381.2	1,476.5	6.9	74.2
August	909.7	96.2	1,006.0	71.2	7.4	78.7	1,084.6	392.3	1,476.9	7.3	73.4
1996—											
May	901.8	115.5	1,017.3	69.3	11.0	80.3	1,097.6	386.4	1,484.0	7.3	74.0
June	897.6	114.3	1,011.9	70.2	11.4	81.6	1,093.5	391.5	1,484.9	7.5	73.6
July	913.4	112.5	1,025.9	65.3	9.3	74.6	1,100.5	386.3	1,486.7	6.8	74.0
August	902.7	119.1	1,021.8	69.8	12.0	81.8	1,103.6	384.9	1,488.5	7.4	74.1
MARRIED FEMALES											
August—											
1992	235.6	186.5	422.1	17.2	6.9	24.1	446.2	379.2	825.4	5.4	54.1
1993	240.7	177.2	417.9	18.4	9.3	27.7	445.6	378.2	823.8	6.2	54.1
1994	255.6	179.1	434.7	13.8	7.1	21.0	455.7	390.1	845.8	4.6	53.9
1995—											
June	264.1	196.6	460.7	15.0	5.6	20.5	481.2	379.5	860.7	4.3	55.9
July	270.3	188.1	458.4	12.3	5.5	17.8	476.2	376.2	852.4	3.7	55.9
August	269.8	185.9	455.7	14.6	7.7	22.3	478.0	378.8	856.8	4.7	55.8
1996—											
May	255.1	187.0	442.0	15.0	8.8	23.7	465.8	397.8	863.5	5.1	53.9
June	254.8	191.4	446.1	15.3	9.2	24.6	470.7	395.3	866.0	5.2	54.4
July	262.9	187.7	450.5	13.8	6.3	20.1	470.7	393.7	864.4	4.3	54.4
August	264.3	188.0	452.3	12.3	8.8	21.1	473.3	388.6	861.9	4.5	54.9
ALL FEMALES											
August—											
1992	448.3	276.3	724.6	50.0	18.1	68.2	792.8	709.5	1,502.3	8.6	52.8
1993	463.9	261.8	725.7	49.2	19.5	68.7	794.4	720.8	1,515.2	8.6	52.4
1994	478.9	275.0	753.9	39.4	16.5	55.9	809.8	720.0	1,529.8	6.9	52.9
1995—											
June	496.8	286.8	783.6	37.0	15.5	52.5	836.1	702.4	1,538.5	6.3	54.3
July	503.8	274.1	777.9	37.0	13.2	50.2	828.1	710.9	1,538.9	6.1	53.8
August	494.9	277.4	772.3	34.5	19.2	53.7	826.0	713.5	1,539.4	6.5	53.7
1996—											
May	490.2	290.8	780.9	34.7	18.7	53.3	834.3	713.0	1,547.2	6.4	53.9
June	491.0	293.2	784.2	32.0	18.2	50.2	834.3	714.1	1,548.5	6.0	53.9
July	507.9	285.5	793.4	33.5	15.0	48.4	841.8	708.9	1,550.7	5.8	54.3
August	501.3	285.0	786.3	30.4	16.9	47.3	833.6	719.2	1,552.8	5.7	53.7
PERSONS											
August—											
1992	1,304.7	366.3	1,671.0	153.2	29.0	182.2	1,853.2	1,088.8	2,942.0	9.8	63.0
1993	1,317.1	347.0	1,664.1	145.3	31.9	177.2	1,841.2	1,126.1	2,967.3	9.6	62.0
1994	1,359.5	386.8	1,746.3	120.1	25.6	145.7	1,892.0	1,104.1	2,996.1	7.7	63.1
1995—											
June	1,407.2	388.6	1,795.8	109.8	22.4	132.2	1,928.0	1,086.5	3,014.5	6.9	64.0
July	1,430.5	366.8	1,797.3	104.3	21.8	126.1	1,923.4	1,092.1	3,015.4	6.6	63.8
August	1,404.6	373.6	1,778.3	105.7	26.6	132.3	1,910.6	1,105.8	3,016.4	6.9	63.3
1996—											
May	1,392.0	406.3	1,798.3	103.9	29.7	133.6	1,931.9	1,099.3	3,031.2	6.9	63.7
June	1,388.6	407.5	1,796.1	102.2	29.6	131.7	1,927.8	1,105.6	3,033.4	6.8	63.6
July	1,421.3	397.9	1,819.2	98.8	24.2	123.0	1,942.3	1,095.1	3,037.4	6.3	63.9
August	1,404.0	404.1	1,808.1	100.2	29.0	129.1	1,937.2	1,104.1	3,041.3	6.7	63.7

TABLE 17. LABOUR FORCE STATUS, BALANCE OF NSW (MSR)

Month	Employed			Unemployed			Labour force ('000)	Not in labour force ('000)	Civilian population aged 15 and over ('000)	Unemployment rate (per cent)	Participation rate (per cent)
	Full-time workers ('000)	Part-time workers ('000)	Total ('000)	Looking for full-time work ('000)	Looking for part-time work ('000)	Total ('000)					
MALES											
August—											
1992	478.0	56.5	534.5	72.4	* 3.3	75.6	610.1	240.4	850.6	12.4	71.7
1993	462.6	52.1	514.6	76.9	* 4.0	80.9	595.5	262.5	858.0	13.6	69.4
1994	465.7	61.6	527.4	60.7	* 3.3	64.0	591.4	275.4	866.8	10.8	68.2
1995—											
June	501.0	62.3	563.3	49.3	* 5.2	54.4	617.7	263.5	881.2	8.8	70.1
July	504.0	58.6	562.6	50.0	* 5.1	55.1	617.7	265.2	882.9	8.9	70.0
August	493.3	71.5	564.8	51.1	* 4.7	55.8	620.6	264.0	884.6	9.0	70.2
1996—											
May	506.7	68.8	575.5	49.1	7.6	56.7	632.2	270.0	902.2	9.0	70.1
June	506.7	70.2	576.9	49.3	7.7	57.1	633.9	270.4	904.3	9.0	70.1
July	508.5	61.0	569.5	50.5	7.7	58.2	627.7	278.1	905.8	9.3	69.3
August	499.5	66.2	565.7	59.0	7.1	66.0	631.8	275.6	907.3	10.5	69.6
MARRIED FEMALES											
August—											
1992	114.4	126.8	241.2	11.9	5.7	17.7	258.8	268.8	527.6	6.8	49.0
1993	116.6	121.1	237.7	12.3	5.3	17.6	255.3	262.2	517.5	6.9	49.3
1994	129.7	113.2	242.9	12.6	* 4.4	17.5	260.3	277.4	537.7	6.7	48.4
1995—											
June	141.9	136.1	278.0	8.9	5.6	14.5	292.5	267.1	559.7	5.0	52.3
July	140.5	134.5	275.0	8.7	* 3.2	11.9	286.9	269.0	555.8	4.1	51.6
August	140.3	125.6	265.8	10.8	* 4.1	14.8	280.7	262.2	542.9	5.3	51.7
1996—											
May	136.4	135.4	271.9	8.7	5.5	14.2	286.1	272.3	558.4	5.0	51.2
June	141.1	135.7	276.9	8.5	5.3	13.9	290.7	260.6	551.3	4.8	52.7
July	141.2	124.4	265.6	11.9	* 5.1	17.0	282.6	271.3	553.9	6.0	51.0
August	136.6	127.3	263.9	10.2	5.3	15.5	279.4	276.6	556.0	5.5	50.2
ALL FEMALES											
August—											
1992	190.6	176.7	367.3	32.4	13.0	45.4	412.7	455.5	868.2	11.0	47.5
1993	190.4	175.7	366.1	29.6	11.0	40.6	406.7	470.7	877.5	10.0	46.4
1994	197.4	163.3	360.7	35.4	10.1	45.4	406.1	482.1	888.2	11.2	45.7
1995—											
June	210.0	199.9	409.9	21.9	10.4	32.3	442.2	459.5	901.7	7.3	49.0
July	210.2	200.3	410.5	22.1	7.8	30.0	440.5	463.0	903.5	6.8	48.8
August	213.9	194.5	408.4	25.3	13.2	38.5	446.9	458.4	905.3	8.6	49.4
1996—											
May	212.1	199.7	411.8	27.4	14.2	41.6	453.4	470.2	923.6	9.2	49.1
June	221.0	202.8	423.9	23.2	13.4	36.6	460.5	465.4	925.9	8.0	49.7
July	223.6	188.3	412.0	29.1	13.4	42.5	454.4	473.2	927.7	9.3	49.0
August	219.4	187.3	406.7	29.6	13.3	42.9	449.6	479.8	929.5	9.5	48.4
PERSONS											
August—											
1992	668.6	233.2	901.8	104.7	16.3	121.1	1,022.9	695.9	1,718.8	11.8	59.5
1993	653.0	227.7	880.7	106.5	14.9	121.5	1,002.2	733.3	1,735.5	12.1	57.7
1994	663.1	224.9	888.0	96.1	13.3	109.5	997.5	757.5	1,755.0	11.0	56.8
1995—											
June	711.1	262.2	973.2	71.2	15.6	86.7	1,060.0	722.9	1,782.9	8.2	59.5
July	714.3	258.9	973.1	72.1	12.9	85.0	1,058.2	728.2	1,786.4	8.0	59.2
August	707.2	266.0	973.2	76.3	18.0	94.3	1,067.5	722.4	1,789.9	8.8	59.6
1996—											
May	718.8	268.5	987.3	76.5	21.7	98.3	1,085.6	740.3	1,825.8	9.1	59.5
June	727.7	273.0	1,000.7	72.5	21.2	93.7	1,094.4	735.8	1,830.2	8.6	59.8
July	732.1	249.4	981.5	79.6	21.1	100.7	1,082.2	751.3	1,833.5	9.3	59.0
August	719.0	253.5	972.4	88.6	20.4	109.0	1,081.4	755.4	1,836.8	10.1	58.9

TABLE 18. LABOUR FORCE STATUS (a), REGIONS OF NSW

	<i>Month</i>	<i>Employed ('000)</i>	<i>Unemployed ('000)</i>	<i>Labour force ('000)</i>	<i>Not in labour force ('000)</i>	<i>Unemp- loyment rate (per cent)</i>	<i>Partici- pation rate (per cent)</i>
INNER SYDNEY AND INNER WESTERN SYDNEY (SRs)							
MALES	1995— August	111.7	5.2	116.9	50.7	4.4	69.7
	1996— June	119.5	8.2	127.7	52.6	6.4	70.8
	July	118.4	8.9	127.4	49.7	7.0	71.9
	August	118.0	10.0	128.0	50.1	7.8	71.9
FEMALES	1995— August	86.0	4.9	90.9	78.8	5.4	53.6
	1996— June	94.8	5.6	100.5	70.4	5.6	58.8
	July	90.7	4.6	95.3	66.9	4.8	58.8
	August	87.3	4.6	91.9	70.7	5.1	56.5
PERSONS	1995— August	197.7	10.1	207.8	129.6	4.8	61.6
	1996— June	214.3	13.9	228.2	123.0	6.1	65.0
	July	209.2	13.5	222.7	116.5	6.1	65.6
	August	205.3	14.6	220.0	120.8	6.6	64.5
INNER SYDNEY (SR)							
MALES	1995— August	68.5	* 3.3	71.9	34.5	* 4.6	67.6
	1996— June	72.7	4.3	77.0	33.0	5.6	70.0
	July	74.6	* 3.5	78.1	31.4	* 4.4	71.3
	August	72.3	5.5	77.8	31.2	7.1	71.4
FEMALES	1995— August	56.2	* 3.4	59.6	44.4	* 5.7	57.3
	1996— June	66.1	* 2.7	68.8	39.0	* 3.9	63.8
	July	62.7	* 2.2	64.9	35.7	* 3.4	64.5
	August	58.6	* 1.7	60.3	41.0	* 2.8	59.5
PERSONS	1995— August	124.8	6.7	131.4	78.9	5.1	62.5
	1996— June	138.8	7.0	145.8	72.0	4.8	67.0
	July	137.3	5.7	143.0	67.2	4.0	68.0
	August	130.9	7.2	138.1	72.2	5.2	65.7
EASTERN SUBURBS (SR)							
MALES	1995— August	73.3	4.6	77.9	26.3	5.9	74.7
	1996— June	67.5	3.9	71.4	26.1	5.5	73.2
	July	68.9	* 2.4	71.3	22.4	* 3.4	76.1
	August	69.0	* 2.7	71.7	22.7	* 3.8	76.0
FEMALES	1995— August	58.0	* 1.5	59.5	40.8	* 2.6	59.3
	1996— June	54.1	3.7	57.8	41.7	6.5	58.1
	July	53.0	* 2.0	55.0	38.9	* 3.6	58.6
	August	57.5	* 1.5	59.0	38.6	* 2.5	60.4
PERSONS	1995— August	131.2	6.2	137.4	67.2	4.5	67.2
	1996— June	121.6	7.7	129.2	67.8	5.9	65.6
	July	121.9	4.4	126.3	61.2	3.5	67.4
	August	126.5	4.2	130.7	61.3	3.2	68.1

TABLE 18. LABOUR FORCE STATUS (a), REGIONS OF NSW—continued

	Month	Employed (<i>'000</i>)	Unemployed (<i>'000</i>)	Labour force (<i>'000</i>)	Not in labour force (<i>'000</i>)	Unemp- loyment rate (per cent)	Partici- pation rate (per cent)
ST GEORGE—SUTHERLAND (SR)							
MALES	1995— August	117.9	* 3.2	121.2	38.4	* 2.6	75.9
	1996— June	123.3	8.7	132.0	46.0	6.6	74.1
	July	120.2	6.9	127.1	43.7	5.4	74.4
	August	123.3	8.0	131.3	42.8	6.1	75.4
FEMALES	1995— August	96.6	* 2.9	99.5	75.4	* 2.9	56.9
	1996— June	92.0	5.1	97.0	73.3	5.2	57.0
	July	92.9	* 3.0	95.9	72.0	* 3.2	57.1
	August	92.7	4.0	96.7	75.0	4.2	56.3
PERSONS	1995— August	214.5	6.1	220.6	113.9	2.8	66.0
	1996— June	215.3	13.7	229.0	119.3	6.0	65.7
	July	213.1	9.9	223.1	115.7	4.5	65.8
	August	216.0	12.0	228.0	117.8	5.3	65.9
CANTERBURY—BANKSTOWN (SR)							
MALES	1995— August	76.9	8.2	85.1	34.8	9.6	70.9
	1996— June	72.1	11.8	83.9	40.8	14.1	67.3
	July	74.5	11.3	85.8	38.0	13.2	69.3
	August	74.4	10.1	84.5	37.4	11.9	69.3
FEMALES	1995— August	51.0	4.3	55.3	59.1	7.8	48.3
	1996— June	55.0	6.6	61.6	67.7	10.8	47.7
	July	56.3	6.6	62.9	66.9	10.6	48.5
	August	56.3	3.9	60.2	63.8	6.5	48.5
PERSONS	1995— August	127.9	12.5	140.3	93.9	8.9	59.9
	1996— June	127.1	18.4	145.6	108.5	12.7	57.3
	July	130.8	17.9	148.7	104.9	12.1	58.6
	August	130.7	14.0	144.7	101.2	9.7	58.8
FAIRFIELD—LIVERPOOL AND OUTER SOUTH WESTERN SYDNEY (SRs)							
MALES	1995— August	129.4	19.5	148.8	46.0	13.1	76.4
	1996— June	133.2	15.7	148.9	44.3	10.5	77.1
	July	137.3	15.9	153.2	42.4	10.4	78.3
	August	135.3	18.0	153.2	43.5	11.7	77.9
FEMALES	1995— August	88.2	13.6	101.8	93.9	13.4	52.0
	1996— June	85.7	9.1	94.9	100.7	9.6	48.5
	July	88.6	12.0	100.6	99.3	11.9	50.3
	August	85.2	12.1	97.3	99.4	12.4	49.5
PERSONS	1995— August	217.5	33.1	250.6	139.8	13.2	64.2
	1996— June	219.0	24.8	243.8	145.0	10.2	62.7
	July	225.9	27.8	253.8	141.7	11.0	64.2
	August	220.5	30.1	250.5	142.9	12.0	63.7

TABLE 18. LABOUR FORCE STATUS (a), REGIONS OF NSW—continued

Month		Employed (<i>'000</i>)	Unemployed (<i>'000</i>)	Labour force (<i>'000</i>)	Not in labour force (<i>'000</i>)	Unemp- loyment rate (per cent)	Partici- pation rate (per cent)
FAIRFIELD-LIVERPOOL (SR)							
MALES	1995— August	72.5	13.1	85.6	27.2	15.3	75.9
	1996— June	70.9	12.6	83.5	29.9	15.1	73.6
	July	70.4	12.1	82.5	29.4	14.7	73.8
	August	71.9	14.0	85.9	29.8	16.3	74.3
FEMALES	1995— August	48.7	9.6	58.3	62.2	16.5	48.4
	1996— June	43.2	5.4	48.6	61.7	11.1	44.1
	July	40.7	7.9	48.6	58.8	16.3	45.3
	August	42.2	7.2	49.4	59.2	14.5	45.5
PERSONS	1995— August	121.2	22.7	143.9	89.4	15.8	61.7
	1996— June	114.2	18.0	132.1	91.6	13.6	59.0
	July	111.1	20.1	131.1	88.1	15.3	59.8
	August	114.1	21.2	135.3	89.0	15.7	60.3
CENTRAL WESTERN SYDNEY (SR)							
MALES	1995— August	48.2	8.3	56.5	24.8	14.7	69.5
	1996— June	55.8	7.5	63.4	33.8	11.9	65.2
	July	62.5	6.8	69.3	36.4	9.9	65.6
	August	65.5	9.0	74.6	32.1	12.1	69.9
FEMALES	1995— August	37.8	3.8	41.6	50.9	9.2	45.0
	1996— June	41.0	* 3.2	44.1	56.9	* 7.2	43.7
	July	40.9	3.5	44.4	57.6	8.0	43.5
	August	46.1	4.9	51.0	58.1	9.6	46.7
PERSONS	1995— August	86.0	12.1	98.1	75.8	12.3	56.4
	1996— June	96.8	10.7	107.5	90.7	10.0	54.2
	July	103.3	10.4	113.7	94.0	9.1	54.7
	August	111.6	13.9	125.6	90.2	11.1	58.2
OUTER WESTERN SYDNEY (SR)							
MALES	1995— August	91.1	8.4	99.6	25.6	8.5	79.6
	1996— June	76.6	4.4	80.9	22.9	5.4	77.9
	July	75.8	3.7	79.5	23.7	4.7	77.0
	August	76.2	6.2	82.4	21.3	7.6	79.4
FEMALES	1995— August	71.6	4.4	76.1	51.1	5.8	59.8
	1996— June	60.6	* 2.4	63.0	48.0	* 3.8	56.8
	July	62.1	* 3.0	65.0	48.3	* 4.6	57.4
	August	60.2	* 3.0	63.2	49.9	* 4.7	55.9
PERSONS	1995— August	162.8	12.9	175.7	76.6	7.3	69.6
	1996— June	137.2	6.7	143.9	70.9	4.7	67.0
	July	137.9	6.7	144.6	72.0	4.6	66.8
	August	136.4	9.2	145.6	71.2	6.3	67.2

TABLE 18. LABOUR FORCE STATUS (a), REGIONS OF NSW—continued

	<i>Month</i>	<i>Employed</i> ('000)	<i>Unemployed</i> ('000)	<i>Labour</i> <i>force</i> ('000)	<i>Not in</i> <i>labour</i> <i>force</i> ('000)	<i>Unemp-</i> <i>loyment</i> <i>rate</i> (per cent)	<i>Partici-</i> <i>pation</i> <i>rate</i> (per cent)
BLACKTOWN—BAULKHAM HILLS (SR)							
MALES	1995— August	101.0	6.0	107.0	26.2	5.6	80.3
	1996— June	94.5	5.5	100.0	26.9	5.5	78.8
	July	94.3	4.2	98.5	29.8	4.3	76.8
	August	91.8	4.3	96.1	28.5	4.5	77.1
FEMALES	1995— August	75.3	4.0	79.3	62.8	5.0	55.8
	1996— June	75.1	5.4	80.6	56.2	6.7	58.9
	July	78.4	3.5	81.9	58.1	4.3	58.5
	August	78.5	3.0	81.5	57.2	3.7	58.7
PERSONS	1995— August	176.3	9.9	186.2	89.0	5.3	67.7
	1996— June	169.7	10.9	180.6	83.1	6.0	68.5
	July	172.6	7.7	180.4	87.8	4.3	67.3
	August	170.4	7.3	177.6	85.7	4.1	67.4
LOWER NORTHERN SYDNEY (SR)							
MALES	1995— August	78.6	* 3.7	82.3	25.3	* 4.4	76.5
	1996— June	79.9	* 4.3	84.1	25.6	* 5.1	76.7
	July	77.5	* 3.4	80.9	25.7	* 4.2	75.9
	August	75.6	* 2.1	77.7	29.3	* 2.7	72.6
FEMALES	1995— August	67.8	* 3.1	70.9	51.9	* 4.4	57.7
	1996— June	67.4	* 1.5	68.9	52.7	* 2.2	56.7
	July	65.6	* 2.8	68.4	50.6	* 4.1	57.5
	August	68.2	* 1.4	69.7	50.9	* 2.0	57.8
PERSONS	1995— August	146.4	6.8	153.2	77.3	4.4	66.5
	1996— June	147.2	5.8	153.0	78.3	3.8	66.2
	July	143.1	6.2	149.3	76.2	4.1	66.2
	August	143.8	* 3.6	147.4	80.2	* 2.4	64.8
HORNSBY—KU-RING-GAI (SR)							
MALES	1995— August	65.6	* 2.1	67.7	28.8	* 3.1	70.1
	1996— June	67.2	* 2.8	69.9	21.9	* 3.9	76.2
	July	71.0	* 3.7	74.7	23.8	* 4.9	75.8
	August	69.0	* 3.3	72.3	25.3	* 4.5	74.1
FEMALES	1995— August	51.3	* 1.9	53.2	46.7	* 3.5	53.3
	1996— June	52.7	* 1.2	53.9	47.0	* 2.3	53.4
	July	57.2	* 3.3	60.5	51.3	* 5.4	54.1
	August	52.4	* 1.5	53.9	52.3	* 2.7	50.7
PERSONS	1995— August	116.9	4.0	120.9	75.5	3.3	61.6
	1996— June	119.9	4.0	123.9	68.9	3.2	64.3
	July	128.2	7.0	135.1	75.1	5.2	64.3
	August	121.5	4.7	126.2	77.6	3.7	61.9

TABLE 18. LABOUR FORCE STATUS (a), REGIONS OF NSW—continued

Month		Employed (^{'000})	Unemployed (^{'000})	Labour force (^{'000})	Not in labour force (^{'000})	Unemp- loyment rate (per cent)	Partici- pation rate (per cent)
NORTHERN BEACHES (SR) (b)							
MALES	1995— August	60.1	* 2.1	62.2	21.9	* 3.4	73.9
	1996— June	59.5	* 1.8	61.3	19.3	* 3.0	76.0
	July	61.5	2.2	63.7	19.1	3.5	76.9
	August	59.0	2.4	61.4	20.5	3.9	75.0
FEMALES	1995— August	48.6	2.9	51.5	39.4	5.6	56.6
	1996— June	53.9	* 2.1	56.0	46.0	* 3.8	54.9
	July	55.0	* 1.2	56.2	44.5	* 2.0	55.8
	August	52.4	* 1.8	54.2	46.9	* 3.3	53.6
PERSONS	1995— August	108.7	5.0	113.7	61.3	4.4	65.0
	1996— June	113.4	4.0	117.4	65.4	3.4	64.2
	July	116.5	3.4	119.9	63.7	2.8	65.3
	August	111.4	4.1	115.6	67.4	3.6	63.2
GOSFORD-WYONG (SR)							
MALES	1995— August	52.1	7.5	59.6	43.3	12.5	57.9
	1996— June	62.7	7.0	69.7	31.2	10.0	69.1
	July	64.0	5.1	69.1	31.7	7.4	68.6
	August	64.6	5.7	70.3	31.4	8.1	69.1
FEMALES	1995— August	40.1	6.3	46.4	62.6	13.5	42.6
	1996— June	51.8	4.1	56.0	53.5	7.4	51.1
	July	52.7	* 3.0	55.7	54.6	* 5.3	50.5
	August	49.4	5.7	55.0	56.3	10.3	49.4
PERSONS	1995— August	92.2	13.7	106.0	105.9	13.0	50.0
	1996— June	114.6	11.2	125.7	84.7	8.9	59.7
	July	116.7	8.1	124.8	86.3	6.5	59.1
	August	114.0	11.3	125.3	87.6	9.1	58.8
HUNTER (SR)							
MALES	1995— August	122.4	13.9	136.3	67.8	10.2	66.8
	1996— June	124.9	16.3	141.3	63.3	11.6	69.1
	July	123.9	13.2	137.1	62.6	9.6	68.7
	August	124.2	18.5	142.6	67.4	12.9	67.9
FEMALES	1995— August	91.3	8.7	100.0	115.6	8.7	46.4
	1996— June	90.8	10.6	101.4	110.4	10.5	47.9
	July	88.5	8.8	97.3	110.5	9.1	46.8
	August	87.9	10.0	97.9	115.6	10.3	45.9
PERSONS	1995— August	213.7	22.6	236.3	183.5	9.6	56.3
	1996— June	215.7	27.0	242.7	173.6	11.1	58.3
	July	212.4	22.0	234.4	173.1	9.4	57.5
	August	212.1	28.5	240.6	183.0	11.9	56.8

TABLE 18. LABOUR FORCE STATUS (a). REGIONS OF NSW—continued

	Month	Employed (^{'000})	Unemployed (^{'000})	Labour force (^{'000})	Not in labour force (^{'000})	Unemp- loyment rate (per cent)	Partici- pation rate (per cent)
NEWCASTLE (SRS)							
MALES	1995— August	101.9	13.3	115.3	57.8	11.6	66.6
	1996— June	106.6	13.5	120.1	57.9	11.3	67.5
	July	104.8	10.9	115.8	55.7	9.4	67.5
	August	107.8	15.1	122.8	60.3	12.3	67.1
FEMALES	1995— August	80.8	8.0	88.8	100.4	9.0	46.9
	1996— June	79.6	9.2	88.8	99.0	10.3	47.3
	July	74.8	7.7	82.4	97.9	9.3	45.7
	August	73.4	8.9	82.2	104.6	10.8	44.0
PERSONS	1995— August	182.8	21.3	204.1	158.2	10.4	56.3
	1996— June	186.2	22.7	208.9	156.9	10.9	57.1
	July	179.6	18.6	198.2	153.6	9.4	56.3
	August	181.1	23.9	205.0	164.9	11.7	55.4
ILLAWARRA AND SOUTH EASTERN (SRs)							
MALES	1995— August	148.1	18.4	166.4	68.2	11.0	70.9
	1996— June	148.7	12.4	161.1	66.7	7.7	70.7
	July	147.6	12.6	160.2	69.0	7.9	69.9
	August	136.1	14.1	150.2	70.2	9.4	68.1
FEMALES	1995— August	101.6	11.5	113.2	122.5	10.2	48.0
	1996— June	111.8	13.3	125.1	119.3	10.6	51.2
	July	110.3	13.6	123.9	118.4	11.0	51.1
	August	110.1	11.2	121.3	116.8	9.2	50.9
PERSONS	1995— August	249.7	29.9	279.6	190.7	10.7	59.5
	1996— June	260.5	25.7	286.2	186.0	9.0	60.6
	July	257.8	26.2	284.0	187.4	9.2	60.2
	August	246.2	25.3	271.5	187.0	9.3	59.2
ILLAWARRA (SR)							
MALES	1995— August	95.1	15.0	110.2	46.6	13.6	70.3
	1996— June	104.5	9.5	114.1	46.5	8.4	71.0
	July	102.1	10.5	112.6	47.8	9.3	70.2
	August	95.5	12.1	107.6	51.6	11.3	67.6
FEMALES	1995— August	63.1	8.7	71.8	90.6	12.1	44.2
	1996— June	70.1	9.8	80.0	86.5	12.3	48.0
	July	68.9	10.7	79.6	82.6	13.4	49.1
	August	71.7	7.9	79.6	82.0	9.9	49.3
PERSONS	1995— August	158.3	23.7	181.9	137.3	13.0	57.0
	1996— June	174.6	19.4	194.0	133.1	10.0	59.3
	July	171.0	21.2	192.2	130.3	11.0	59.6
	August	167.2	20.0	187.1	133.5	10.7	58.4

TABLE 18. LABOUR FORCE STATUS (a), REGIONS OF NSW—continued

<i>Month</i>	<i>Employed ('000)</i>	<i>Unemployed ('000)</i>	<i>Labour force ('000)</i>	<i>Not in labour force ('000)</i>	<i>Unemp- loyment rate (per cent)</i>	<i>Partici- pation rate (per cent)</i>
WOLLONGONG (SRs)						
MALES 1995— August	74.6	11.3	85.9	29.7	13.1	74.3
1996— June	81.4	6.9	88.4	29.5	7.8	75.0
July	80.4	7.3	87.7	29.5	8.4	74.9
August	75.2	9.1	84.3	33.4	10.8	71.6
FEMALES 1995— August	46.8	6.8	53.6	58.5	12.7	47.8
1996— June	53.7	5.6	59.3	62.9	9.4	48.5
July	54.3	6.3	60.6	56.5	10.4	51.7
August	55.1	4.3	59.4	58.3	7.2	50.5
PERSONS 1995— August	121.4	18.1	139.4	88.1	13.0	61.3
1996— June	135.1	12.5	147.6	92.4	8.5	61.5
July	134.6	13.6	148.3	86.0	9.2	63.3
August	130.3	13.3	143.7	91.7	9.3	61.0
RICHMOND TWEED AND MID-NORTH COAST (SRs)						
MALES 1995— August	96.5	7.8	104.3	61.0	7.5	63.1
1996— June	87.8	14.9	102.7	64.6	14.5	61.4
July	86.1	16.5	102.6	59.9	16.1	63.1
August	92.1	18.2	110.4	60.1	16.5	64.7
FEMALES 1995— August	69.8	5.7	75.5	94.9	7.6	44.3
1996— June	71.3	6.6	77.9	94.4	8.5	45.2
July	70.9	12.1	83.0	89.4	14.6	48.1
August	68.4	10.4	78.8	102.9	13.2	43.4
PERSONS 1995— August	166.3	13.5	179.8	155.9	7.5	53.6
1996— June	159.1	21.5	180.6	159.0	11.9	53.2
July	156.9	28.6	185.6	149.3	15.4	55.4
August	160.5	28.6	189.2	163.0	15.1	53.7
NORTHERN, FAR WEST-NORTH WESTERN AND CENTRAL WEST (SRs) (c)						
MALES 1995— August	120.2	9.4	129.6	43.2	7.2	75.0
1996— June	128.0	6.2	134.1	48.9	4.6	73.3
July	122.9	8.0	130.9	56.6	6.1	69.8
August	125.1	8.3	133.4	47.7	6.2	73.7
FEMALES 1995— August	88.0	9.1	97.1	82.0	9.3	54.2
1996— June	95.7	* 3.0	98.7	88.0	* 3.1	52.9
July	86.1	* 4.7	90.8	99.8	* 5.2	47.7
August	86.2	6.5	92.6	88.7	7.0	51.1
PERSONS 1995— August	208.2	18.4	226.6	125.2	8.1	64.4
1996— June	223.7	9.2	232.8	136.9	3.9	63.0
July	209.0	12.7	221.8	156.4	5.7	58.6
August	211.3	14.8	226.1	136.4	6.5	62.4

TABLE 18. LABOUR FORCE STATUS (a), REGIONS OF NSW—continued

		<i>Employed</i> (<i>'000</i>)	<i>Unemployed</i> (<i>'000</i>)	<i>Labour</i> <i>force</i> (<i>'000</i>)	<i>Not in</i> <i>labour</i> <i>force</i> (<i>'000</i>)	<i>Unemp-</i> <i>loyment</i> <i>rate</i> (<i>per cent</i>)	<i>Partici-</i> <i>pation</i> <i>rate</i> (<i>per cent</i>)
<i>Month</i>							
MURRAY-MURRUMBIDGEE (SR)							
MALES	1995—						
	August	72.0	5.0	77.1	21.1	6.5	78.5
	1996—						
	June	81.1	6.9	88.0	24.7	7.9	78.1
	July	83.2	6.1	89.3	26.2	6.9	77.3
	August	82.0	5.9	88.0	25.9	6.7	77.3
FEMALES	1995—						
	August	55.0	* 2.9	57.9	40.3	* 5.0	59.0
	1996—						
	June	51.0	* 3.1	54.0	47.1	* 5.7	53.4
	July	51.1	* 3.2	54.3	50.0	* 6.0	52.1
	August	50.3	* 3.9	54.2	51.2	* 7.2	51.5
PERSONS	1995—						
	August	127.1	7.9	135.0	61.3	5.9	68.8
	1996—						
	June	132.0	10.0	142.1	71.8	7.0	66.4
	July	134.3	9.4	143.7	76.2	6.5	65.3
	August	132.4	9.8	142.2	77.0	6.9	64.9

(a) While the Labour Force Survey is designed primarily to produce reliable estimates at the national and State/Territory level, it also delivers estimates for a number of regions within States. As with national and State estimates, regional labour force estimates are subject to sampling error. Since estimates for regions are components of corresponding estimates at the State level — and are thus based on a considerably smaller sample size — they are subject to higher relative standard error. Care should therefore be taken in interpretation of regional estimates, particularly month to month movements. Tables of standard errors are on pages 62–64 of this publication.

(b) Previously Manly-Warringah (SR). (c) Excludes components of Far West (SD). These are published as part of Balance of NSW (MSR).

**TABLE 19. EMPLOYED PERSONS: INDUSTRY (a) AND OCCUPATION (b)
SYDNEY (MSR) AND BALANCE OF NSW (MSR), AUGUST 1996
(^{'000})**

<i>Industry division and Major occupation group</i>	<i>Males</i>	<i>Females</i>	<i>Persons</i>
SYDNEY (MSR)			
Industry—			
Agriculture, forestry and fishing	9.0	* 3.9	12.9
Mining	* 3.7	* 0.8	* 4.5
Manufacturing	172.5	80.9	253.4
Electricity, gas and water supply	11.6	* 3.2	14.7
Construction	118.9	19.7	138.6
Wholesale trade	83.7	47.4	131.1
Retail trade	134.3	122.8	257.1
Accommodation, cafes and restaurants	40.9	39.3	80.2
Transport and storage	73.6	25.3	98.9
Communication services	30.6	12.9	43.5
Finance and insurance	49.4	56.5	106.0
Property and business services	125.6	95.6	221.2
Government administration and defence	33.6	29.4	63.0
Education	43.7	85.2	128.9
Health and community services	37.0	113.1	150.1
Cultural and recreational services	18.5	19.8	38.3
Personal and other services	35.3	30.3	65.5
Occupation—			
Managers and administrators	90.2	21.5	111.8
Professionals	188.5	175.2	363.7
Associate professionals	125.8	54.8	180.6
Tradespersons and related workers	205.6	18.6	224.2
Advanced clerical and service workers	10.5	105.4	115.8
Intermediate clerical, sales and service workers	104.9	217.5	322.4
Intermediate production and transport workers	130.5	22.9	153.5
Elementary clerical, sales and service workers	74.7	118.6	193.3
Labourers and related workers	91.1	51.7	142.8
Total employed	1,021.8	786.3	1,808.1
BALANCE OF NSW (MSR)			
Industry—			
Agriculture, forestry and fishing	72.0	28.1	100.1
Mining	18.8	* 0.6	19.4
Manufacturing	96.6	24.0	120.6
Electricity, gas and water supply	8.5	* 1.9	10.4
Construction	59.9	7.3	67.2
Wholesale trade	34.6	12.8	47.5
Retail trade	74.2	87.0	161.2
Accommodation, cafes and restaurants	21.6	26.8	48.4
Transport and storage	33.6	7.9	41.5
Communication services	7.4	* 5.2	12.6
Finance and insurance	10.2	15.7	25.9
Property and business services	29.9	28.1	58.0
Government administration and defence	31.7	15.4	47.1
Education	24.1	49.7	73.8
Health and community services	17.3	71.4	88.8
Cultural and recreational services	7.5	5.6	13.2
Personal and other services	17.6	19.1	36.8
Occupation—			
Managers and administrators	67.3	16.6	83.9
Professionals	57.5	77.4	134.9
Associate professionals	69.2	35.2	104.4
Tradespersons and related workers	129.6	13.9	143.5
Advanced clerical and service workers	* 3.5	41.4	44.9
Intermediate clerical, sales and service workers	32.6	98.4	130.9
Intermediate production and transport workers	97.0	10.9	107.9
Elementary clerical, sales and service workers	32.9	71.3	104.2
Labourers and related workers	76.0	41.7	117.7
Total employed	565.7	406.7	972.4

(a) Industry data are now classified according to the Australian and New Zealand Standard Industrial Classification. See the Explanatory Notes for more details.

(b) Occupation data are now classified according to the Second Edition of the Australian Standard Classification of Occupations (ASCO). See the Explanatory Notes for more details.

TABLE 20. LABOUR FORCE STATUS: ORIGINAL SERIES, ACT

Month	Employed		Unemployed			Labour force ('000)	Not in labour force ('000)	Civilian population aged 15 and over ('000)	Unemployment rate (per cent)	Participation rate (per cent)	
	Full-time workers ('000)	Part-time workers ('000)	Total ('000)	Looking for full-time work ('000)	Looking for part-time work ('000)						
MALES											
August—											
1992	70.0	8.4	78.4	4.3	* 1.2	5.5	83.8	22.6	106.5	6.5	78.7
1993	70.0	10.7	80.7	5.6	1.2	6.8	87.5	22.0	109.6	7.8	79.9
1994	71.3	11.4	82.7	4.9	* 0.8	5.8	88.5	23.6	112.0	6.5	79.0
1995—											
June	72.1	11.3	83.5	5.6	1.1	6.7	90.2	22.7	112.9	7.4	79.9
July	73.2	12.4	85.6	5.0	1.6	6.7	92.3	20.7	113.0	7.2	81.7
August	72.5	12.7	85.2	6.3	1.3	7.7	92.9	20.2	113.1	8.3	82.1
1996—											
May	73.4	10.8	84.2	5.9	1.4	7.3	91.5	22.4	113.8	8.0	80.4
June	72.7	10.9	83.6	5.9	* 0.8	6.7	90.2	23.7	113.9	7.4	79.2
July	73.6	10.6	84.2	6.2	1.1	7.3	91.5	22.6	114.1	8.0	80.2
August	72.1	10.4	82.4	6.5	1.4	7.9	90.4	24.0	114.3	8.8	79.0
MARRIED FEMALES											
August—											
1992	24.9	15.8	40.7	* 1.2	1.4	2.6	43.3	20.7	63.9	6.0	67.7
1993	26.1	15.0	41.1	1.3	* 0.3	1.6	42.7	22.3	65.0	3.7	65.6
1994	27.1	16.2	43.2	* 0.8	* 0.8	1.6	44.8	20.5	65.3	3.6	68.7
1995—											
June	26.2	16.9	43.1	* 0.8	* 0.5	1.3	44.4	20.9	65.3	2.9	68.0
July	27.7	15.9	43.5	* 0.7	* 0.4	1.1	44.7	22.0	66.6	2.6	67.0
August	27.7	17.5	45.2	* 0.7	* 0.6	1.3	46.5	21.3	67.8	2.8	68.6
1996—											
May	25.4	18.5	43.8	1.4	* 0.6	1.9	45.8	20.9	66.6	4.2	68.7
June	26.3	18.3	44.6	* 0.8	1.0	1.8	46.3	21.0	67.4	3.8	68.8
July	25.9	17.8	43.7	1.2	* 0.7	2.0	45.7	20.7	66.4	4.3	68.9
August	25.6	16.9	42.5	1.4	* 0.6	2.0	44.5	21.3	65.8	4.4	67.6
ALL FEMALES											
August—											
1992	39.2	26.2	65.4	3.2	3.6	6.8	72.2	40.4	112.6	9.5	64.1
1993	43.7	26.7	70.4	3.1	1.3	4.4	74.8	40.0	114.8	5.9	65.2
1994	45.9	25.5	71.4	2.7	2.1	4.8	76.2	40.1	116.4	6.3	65.5
1995—											
June	43.9	29.6	73.5	2.6	1.4	4.1	77.5	39.9	117.4	5.2	66.0
July	45.1	27.8	72.9	2.9	1.6	4.4	77.3	40.2	117.5	5.7	65.8
August	43.5	29.6	73.2	2.5	1.9	4.4	77.6	40.0	117.6	5.7	66.0
1996—											
May	43.6	28.6	72.2	3.9	2.3	6.2	78.4	40.0	118.4	7.9	66.2
June	43.6	29.1	72.8	3.1	2.6	5.7	78.5	40.1	118.5	7.3	66.2
July	43.4	27.7	71.1	4.2	1.8	6.0	77.1	41.6	118.7	7.7	64.9
August	42.9	27.6	70.5	4.7	1.8	6.4	77.0	41.9	118.9	8.4	64.8
PERSONS											
August—											
1992	109.2	34.6	143.8	7.5	4.8	12.3	156.0	63.1	219.1	7.9	71.2
1993	113.7	37.4	151.1	8.8	2.5	11.3	162.3	62.0	224.4	6.9	72.3
1994	117.3	36.9	154.1	7.6	3.0	10.6	164.7	63.7	228.4	6.4	72.1
1995—											
June	116.0	41.0	157.0	8.3	2.5	10.8	167.7	62.6	230.3	6.4	72.8
July	118.2	40.2	158.5	7.9	3.2	11.1	169.6	61.0	230.5	6.5	73.6
August	116.1	42.3	158.4	8.9	3.3	12.1	170.5	60.2	230.7	7.1	73.9
1996—											
May	117.0	39.4	156.4	9.8	3.6	13.5	169.9	62.4	232.3	7.9	73.1
June	116.3	40.0	156.3	9.0	3.4	12.4	168.7	63.8	232.4	7.3	72.6
July	117.0	38.3	155.3	10.4	2.9	13.2	168.6	64.3	232.8	7.9	72.4
August	115.0	38.0	153.0	11.2	3.2	14.4	167.3	65.8	233.2	8.6	71.8

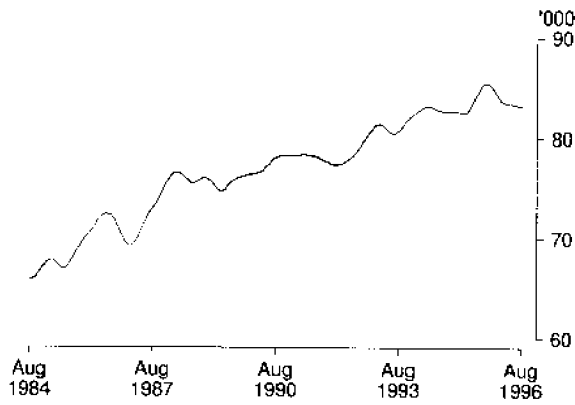
TABLE 21. LABOUR FORCE STATUS: TREND SERIES, ACT

Month	Employed (^{'000})	Unemployed (^{'000})	Labour force (^{'000})	Unemployment rate (per cent)	Participation rate (per cent)
MALES					
August—					
1992	78.9	6.8	85.8	8.0	80.6
1993	80.8	6.9	87.6	7.8	80.0
1994	82.8	6.6	89.4	7.4	79.8
1995—					
June	83.9	7.3	91.2	8.0	80.8
July	84.6	7.4	91.9	8.0	81.4
August	85.2	7.3	92.4	7.9	81.7
September	85.5	7.1	92.6	7.7	81.8
October	85.5	7.0	92.5	7.5	81.7
November	85.2	6.9	92.1	7.5	81.3
December	84.7	6.9	91.6	7.6	80.8
1996—					
January	84.2	7.1	91.2	7.8	80.4
February	83.8	7.3	91.1	8.0	80.2
March	83.6	7.4	91.0	8.1	80.0
April	83.5	7.5	91.0	8.2	80.0
May	83.5	7.6	91.1	8.3	80.0
June	83.4	7.7	91.1	8.5	80.0
July	83.3	7.9	91.2	8.6	79.9
August	83.3	8.1	91.3	8.8	79.9
FEMALES					
August—					
1992	65.6	6.7	72.3	9.3	64.2
1993	70.4	5.6	75.9	7.3	66.1
1994	71.5	5.4	76.8	7.0	66.0
1995—					
June	72.8	4.8	77.6	6.2	66.1
July	73.3	4.7	78.0	6.0	66.4
August	73.7	4.7	78.4	6.0	66.7
September	74.0	4.8	78.8	6.1	67.0
October	74.1	5.0	79.1	6.3	67.2
November	74.1	5.2	79.3	6.6	67.3
December	73.9	5.4	79.3	6.8	67.2
1996—					
January	73.5	5.7	79.2	7.2	67.1
February	73.0	5.9	78.9	7.5	66.8
March	72.6	6.1	78.7	7.8	66.6
April	72.2	6.3	78.6	8.1	66.4
May	71.9	6.6	78.5	8.4	66.3
June	71.7	6.8	78.5	8.6	66.2
July	71.5	6.9	78.4	8.8	66.0
August	71.4	7.0	78.4	8.9	65.9
PERSONS					
August—					
1992	144.6	13.6	158.1	8.6	72.2
1993	151.1	12.4	163.6	7.6	72.9
1994	154.3	12.0	166.2	7.2	72.8
1995—					
June	156.7	12.1	168.8	7.2	73.3
July	157.9	12.1	169.9	7.1	73.7
August	158.9	12.0	170.9	7.0	74.1
September	159.5	11.9	171.5	7.0	74.3
October	159.7	12.0	171.6	7.0	74.3
November	159.3	12.1	171.4	7.0	74.1
December	158.6	12.4	170.9	7.2	73.9
1996—					
January	157.7	12.8	170.4	7.5	73.6
February	156.8	13.2	170.0	7.7	73.4
March	156.2	13.5	169.7	8.0	73.2
April	155.7	13.8	169.6	8.2	73.1
May	155.4	14.2	169.6	8.3	73.0
June	155.1	14.5	169.6	8.5	73.0
July	154.8	14.8	169.6	8.7	72.8
August	154.7	15.1	169.7	8.9	72.8

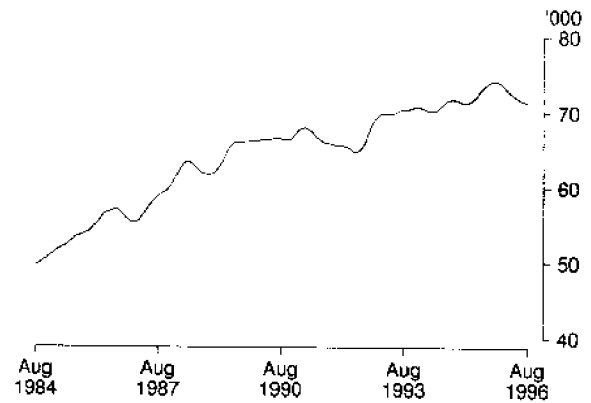
(a) See Explanatory Note 28.

TREND SERIES, ACT (a)

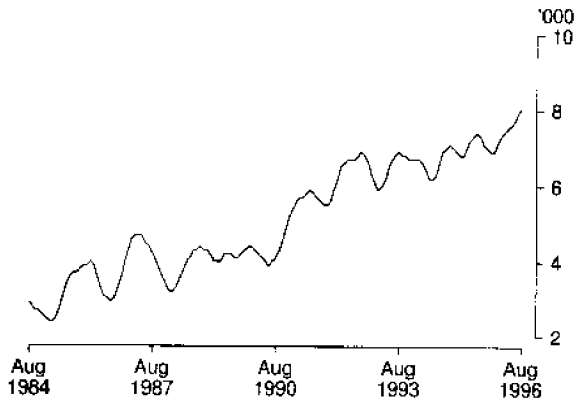
EMPLOYED MALES



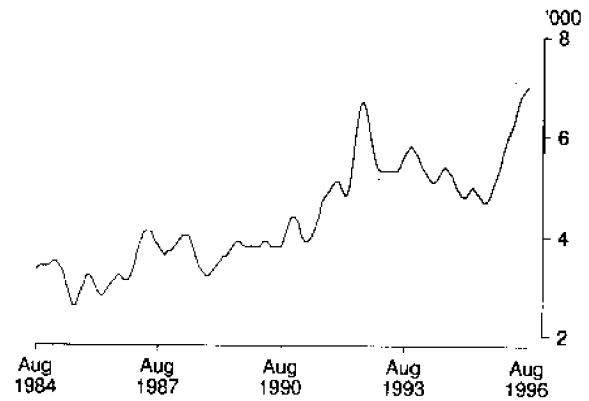
EMPLOYED FEMALES



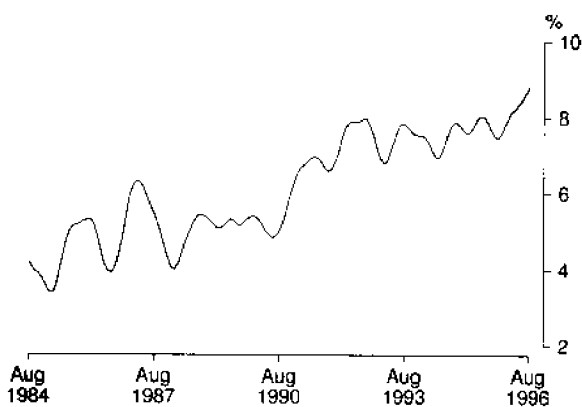
UNEMPLOYED MALES



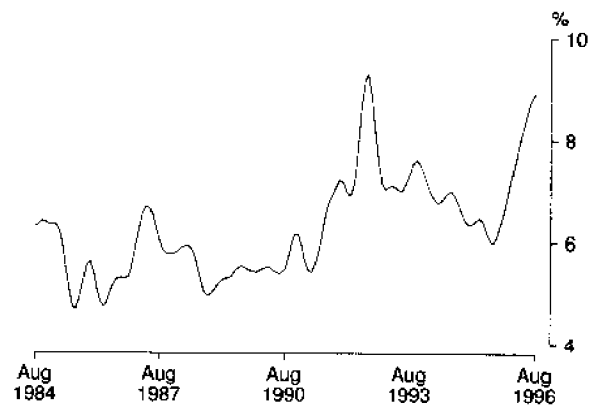
UNEMPLOYED FEMALES



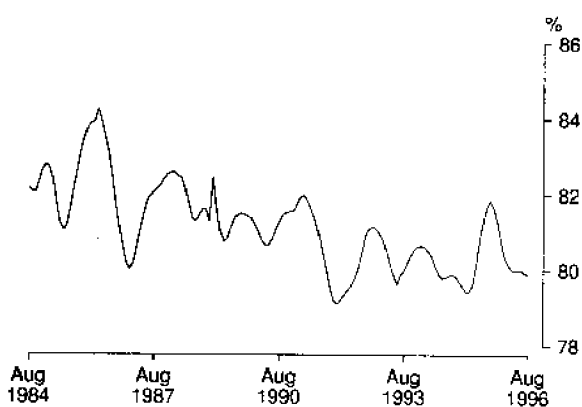
MALE UNEMPLOYMENT RATE



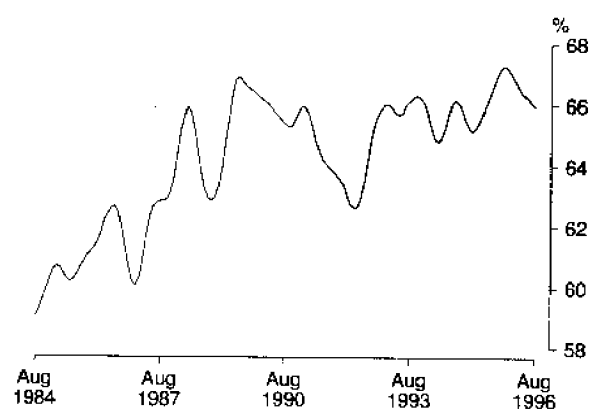
FEMALE UNEMPLOYMENT RATE



MALE PARTICIPATION RATE



FEMALE PARTICIPATION RATE



(a) Comparisons between these graphs should not be made, as their vertical axes are not similarly scaled.

TABLE 22. LABOUR FORCE STATUS: AGE, ACT, AUGUST 1996

	Persons						Total
	Females			Age group (years)			
	Males	Married	Total	15-19	20-24	25 and over	
<i>Employed</i>	82.4	42.5	70.5	9.7	21.2	122.1	153.0
Full-time workers	72.1	25.6	42.9	1.9	14.9	98.1	115.0
Part-time workers	10.4	16.9	27.6	7.8	6.2	24.0	38.0
<i>Unemployed</i>	7.9	2.0	6.4	3.9	2.6	7.9	14.4
Looking for full-time work	6.5	1.4	4.7	1.9	2.2	7.1	11.2
Looking for part-time work	1.4	* 0.6	1.8	2.0	* 0.4	* 0.8	3.2
<i>Labour force</i>	90.4	44.5	77.0	13.6	23.7	130.0	167.3
Not in labour force	24.0	21.3	41.9	9.4	5.8	50.6	65.8
Aged 15-19 attending school	3.5	* 0.0	4.1	7.6	7.6
<i>Civilian population</i>	114.3	65.8	118.9	23.0	29.5	180.6	233.2
— per cent —							
Unemployment rate	8.8	4.4	8.4	28.7	10.8	6.1	8.6
Looking for full-time work	8.3	5.0	9.8	50.0	12.9	6.7	8.9
Participation rate	79.0	67.6	64.8	59.0	80.4	72.0	71.8
Employment/population ratio	72.1	64.6	59.3	42.0	71.7	67.6	65.6
— number —							
Average weekly hours worked by employed persons	38.4	30.2	29.8	16.0	31.7	36.4	34.5
Average duration of unemployment (weeks)	33.8	57.6	36.7	21.6	16.0	48.0	35.1

TABLE 23. NON-INSTITUTIONALISED PERSONS (a): LABOUR FORCE STATUS, BIRTHPLACE AND YEAR OF ARRIVAL, ACT, AUGUST 1996 ('000)

	Employed	Unemployed	Not in labour force	Labour force	Civilian population aged 15 and over
<i>Born in Australia</i>	119.3	10.7	38.7	130.0	168.7
<i>Born outside Australia</i>	33.7	3.7	24.9	37.3	62.3
Arrived before 1966	9.4	* 0.8	11.1	10.3	21.4
Arrived 1966-1970	6.5	* 0.4	2.5	6.8	9.3
Arrived 1971-1975	4.5	* 0.3	1.9	4.8	6.7
Arrived 1976-1980	3.5	* 0.1	1.4	3.6	4.9
Arrived 1981-1985	3.1	* 0.3	1.8	3.4	5.2
Arrived 1986-1990	3.9	* 0.6	3.2	4.6	7.7
Arrived 1991-1995	2.3	* 0.7	2.6	3.0	5.6
Arrived 1991 to survey date	2.7	1.2	3.0	3.9	6.9
<i>Main English speaking countries</i>	14.0	1.0	8.2	15.1	23.2
Arrived before 1966	3.7	* 0.3	4.6	4.0	8.6
Arrived 1966-1970	3.6	* 0.3	1.3	3.9	5.1
Arrived 1971-1975	2.3	* 0.0	* 0.5	2.3	2.8
Arrived 1976-1980	1.7	* 0.1	* 0.7	1.8	2.5
Arrived 1981-1985	1.3	* 0.0	* 0.6	1.3	1.9
Arrived 1986-1990	* 0.7	* 0.1	* 0.2	* 0.8	1.0
Arrived 1991-1995	* 0.6	* 0.1	* 0.3	* 0.7	1.0
Arrived 1991 to survey date	* 0.8	* 0.3	* 0.3	1.1	1.4
<i>Other than Main English speaking countries</i>	19.6	2.7	16.8	22.3	39.1
Arrived before 1966	5.7	* 0.6	6.6	6.3	12.9
Arrived 1966-1970	2.9	* 0.1	1.2	3.0	4.2
Arrived 1971-1975	2.2	* 0.3	1.5	2.5	4.0
Arrived 1976-1980	1.8	* 0.0	* 0.7	1.8	2.5
Arrived 1981-1985	1.8	* 0.3	1.2	2.1	3.3
Arrived 1986-1990	3.2	* 0.6	3.0	3.8	6.8
Arrived 1991-1995	1.8	* 0.6	2.3	2.3	4.6
Arrived 1991 to survey date	2.0	* 0.8	2.8	2.8	5.6
Total	153.0	14.4	63.6	167.3	230.9

(a) Excludes boarding school pupils.

TABLE 24. EMPLOYED PERSONS: INDUSTRY (a) AND OCCUPATION (b), ACT, AUGUST 1996
(^{'000})

<i>Industry division and Major occupation group</i>	<i>Males</i>	<i>Females</i>	<i>Persons</i>
Industry—			
Agriculture, forestry and fishing	* 0.2	* 0.1	* 0.3
Mining	* 0.0	* 0.0	* 0.0
Manufacturing	3.0	* 1.1	4.2
Electricity, gas and water supply	* 0.5	* 0.1	* 0.7
Construction	8.5	1.4	9.9
Wholesale trade	3.1	1.4	4.5
Retail trade	9.8	10.1	19.9
Accommodation, cafes and restaurants	4.1	3.6	7.7
Transport and storage	3.5	* 0.9	4.4
Communication services	1.7	* 1.0	2.7
Finance and insurance	1.3	1.6	3.0
Property and business services	10.3	8.3	18.6
Government administration and defence	21.3	16.5	37.8
Education	5.5	9.6	15.0
Health and community services	3.2	9.8	13.0
Cultural and recreational services	2.4	1.4	3.8
Personal and other services	3.8	3.6	7.4
Occupation—			
Managers and administrators	11.0	4.9	15.9
Professionals	19.8	17.0	36.8
Associate professionals	11.4	6.8	18.1
Tradespersons and related workers	12.8	1.4	14.3
Advanced clerical and service workers	* 0.3	6.2	6.5
Intermediate clerical, sales and service workers	10.3	21.8	32.1
Intermediate production and transport workers	7.0	* 0.8	7.8
Elementary clerical, sales and service workers	5.7	8.9	14.6
Labourers and related workers	4.1	2.8	6.9
Total employed	82.4	70.5	153.0

(a) Industry data are now classified according to the Australian and New Zealand Standard Industrial Classification. See the Explanatory Notes for more details.

(b) Occupation data are now classified according to the Second Edition of the Australian Standard Classification of Occupations (ASCO). See the Explanatory Notes for more details.

EMPLOYMENT BY INDUSTRY DIVISION, ACT, AUGUST 1996

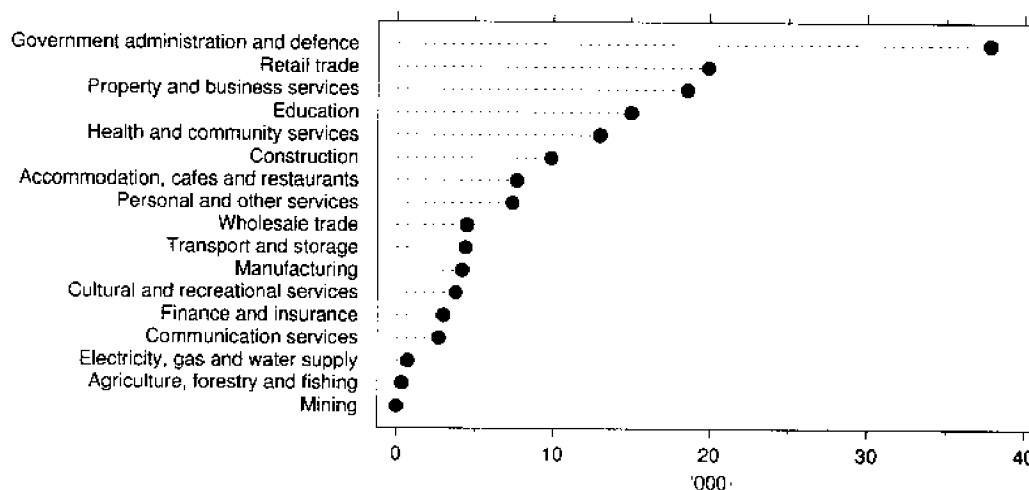
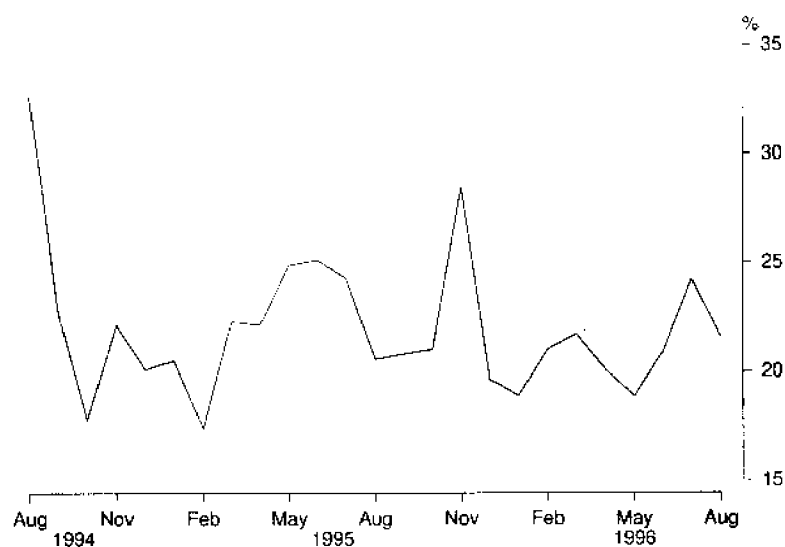


TABLE 25. LONG-TERM UNEMPLOYMENT, ACT

Month	Long-term unemployment									Long-term unemployment as a proportion of total unemployment		
	52 weeks and under 104			104 weeks and over			Total			Males (per cent)	Females (per cent)	Persons (per cent)
	Males ('000)	Females ('000)	Persons ('000)	Males ('000)	Females ('000)	Persons ('000)	Males ('000)	Females ('000)	Persons ('000)			
1995—												
June	* 0.9	* 0.5	* 1.3	1.0	* 0.4	1.4	1.8	* 0.9	2.7	27.2	21.8	25.1
July	* 0.7	* 0.5	* 1.2	* 0.9	* 0.5	1.4	1.7	1.0	2.7	25.2	22.9	24.3
August	* 1.4	* 0.3	* 1.7	* 0.5	* 0.3	* 0.8	1.8	* 0.6	2.5	24.1	14.5	20.6
September	* 0.7	* 0.3	* 1.0	1.0	* 0.2	1.2	1.7	* 0.5	2.2	26.5	12.0	20.8
October	* 0.5	* 0.5	* 1.0	1.0	* 0.1	1.1	1.5	* 0.5	2.0	25.1	14.5	21.0
November	* 1.5	* 1.0	* 2.6	* 0.6	* 0.2	* 0.8	2.1	1.3	3.4	32.4	23.5	28.4
December	* 0.8	* 0.6	* 1.5	* 0.7	* 0.3	1.0	1.5	* 0.9	2.5	22.9	15.8	19.6
1996—												
January	* 1.5	* 0.7	* 2.1	* 0.4	* 0.2	* 0.6	1.9	* 0.9	2.8	22.1	14.5	18.9
February	* 1.1	* 0.6	* 1.7	1.1	* 0.4	1.5	2.2	* 0.9	3.2	29.6	12.3	21.0
March	* 0.9	* 0.8	* 1.8	1.2	* 0.4	1.7	2.1	1.3	3.4	24.6	18.2	21.8
April	* 0.8	* 1.0	* 1.8	0.9	* 0.2	1.1	1.8	1.2	3.0	22.6	17.3	20.1
May	* 0.8	* 0.9	* 1.8	* 0.6	* 0.2	* 0.8	1.4	1.1	2.5	19.7	17.8	18.8
June	* 1.2	* 0.5	* 1.7	* 0.6	* 0.2	* 0.9	1.8	* 0.8	2.6	27.2	13.5	20.9
July	* 1.2	* 0.7	* 1.9	* 0.7	* 0.6	1.3	1.9	1.3	3.2	25.8	22.3	24.2
August	* 0.9	* 0.6	* 1.6	* 0.9	* 0.6	1.5	1.9	1.2	3.1	23.6	19.0	21.6

LONG-TERM UNEMPLOYED AS A PROPORTION OF TOTAL UNEMPLOYED, ACT



EXPLANATORY NOTES

INTRODUCTION

1 This publication contains estimates of the labour force derived from the labour force survey component of the monthly population survey, which is conducted on a sample basis throughout Australia.

THE POPULATION SURVEY

2 This survey consists of the labour force survey (LFS) and, in most months, one or more supplementary topics. The survey is based on a multi-stage area sample of private dwellings (houses, flats, etc.) and non-private dwellings (hotels, motels, etc.) and covers slightly less than 0.5% of the population of New South Wales. The information is obtained from the occupants of selected dwellings by carefully chosen and specially trained interviewers. The interviews are generally conducted during the two weeks beginning on the Monday between the 6th and 12th of each month. The information obtained relates to the week before the interview (i.e. the reference week).

3 From August 1996 the ABS is progressively introducing the use of telephone interviewing into the Labour Force Survey. Households selected for the Labour Force Survey are interviewed each month for 8 months, with one eighth of the sample being replaced each month. The first interview will continue to be conducted face-to-face. Subsequent interviews will be conducted by telephone (if feasible and acceptable to the respondent). Telephone interviewing is to be phased in for each new sample group from August 1996 and will be fully implemented by February 1997. The ABS is confident that the adoption of this method will result in no noticeable impact on key estimates of employment or unemployment.

SCOPE

4 The labour force survey includes all persons aged 15 years and over, except:

- members of the permanent defence forces;
- certain diplomatic personnel of overseas governments, customarily excluded from census and estimated populations;
- overseas residents in Australia; and
- members of non-Australian defence forces (and their dependants) stationed in Australia.

SURVEY SAMPLE REDESIGN

5 Following each Population Census, the ABS redesigns and reselects the LFS to take into account the new information which is obtained from the Census. The sample used in the LFS from September 1987 to August 1992, which was designed and selected using data from the 1986 Census, has been updated and reselected using information collected in the 1991 Census. The new sample was phased in over the period September 1992 to December 1992.

6 For the most part, one quarter of the new sample was introduced each month so that, by December 1992, the entire new sample was in place.

POTENTIAL EFFECTS ON LABOUR FORCE SURVEY ESTIMATES

7 Implications for estimates produced from the LFS due to sample redesign and its implementation are as follows.

- The sampling error overall increased initially by about 7% over the previous level but will decline gradually during the life of the new sample. For State estimates, the initial increase was about 8%, while for the Territories, there was a decrease of 19%. There were also higher standard errors for movements produced over the period September 1992 to December 1992 compared with

EXPLANATORY NOTES *continued*

those for the corresponding series produced prior to this period and from January 1993 onwards. Overall, these were estimated to be up to 20% higher than the normal standard errors on monthly movements.

- Analysis has shown that the unemployment rate is marginally higher (less than 0.5 percentage points on average) for those persons in the sample for the first time. Normally, this will not affect the overall estimates of month-to-month movements because the number of persons in the sample does not change significantly. However, during the transition period, there were twice as many people as usual in the sample for the first time. This may have caused a small upward movement (of less than 0.1 percentage points on average) in the unemployment rate from August 1992 to September 1992 and a compensating decrease from December 1992 to January 1993.

8 For further information, see *Information Paper: Labour Force Survey Sample Design* (6269.0).

DEFINITIONS

9 The labour force category to which a person is assigned depends on the actual activity undertaken during the reference week (i.e. whether working, looking for work, etc.). The following definitions, which conform closely to the international standard definitions specified by the International Labour Office (ILO), relate only to those persons within the scope of the survey.

10 *Employed persons* comprise all civilians aged 15 years and over who, during the reference week:

- worked for one hour or more for pay, profit, commission or payment in kind (including employees, employers and self-employed persons) in a job or business, or on a farm; or
- worked for one hour or more without pay in a family business or on a farm (i.e. unpaid family helpers)
- were employees who had a job but were not at work and were: on paid leave; on leave without pay for less than four weeks up to the end of the reference week; stood down without pay because of bad weather or plant breakdown at their place of employment for less than four weeks up to the end of the reference week; on strike or locked out; on workers' compensation and expected to be returning to their job; or receiving wages or salary while undertaking full-time study; or
- were employers, self-employed persons or unpaid family helpers who had a job, business or farm, but were not at work.

11 Prior to April 1986, unpaid family helpers who worked for 1–14 hours were excluded from the category of employed persons.

12 Employed persons can be classified into:

- *full-time workers* (i.e. those who usually worked 35 hours or more a week (in all jobs) and others who, although usually part-time workers, worked 35 hours or more during the reference week); and
- *part-time workers* (i.e. those who usually worked less than 35 hours a week and who did so during the reference week).

EXPLANATORY NOTES *continued*

13 *Unemployed persons* are all those aged 15 years and over who were not employed during the reference week, and:

- had actively looked for full-time or part-time work at any time in the four weeks up to the end of the reference week, and:
 - were available for work in the reference week, or would have been available except for temporary illness (i.e. lasting for less than four weeks to the end of the reference week); or
 - were waiting to start a new job within four weeks from the end of the reference week and would have started in the reference week if the job had been available then; or
- were waiting to be called back to a full-time or part-time job from which they had been stood down without pay for less than four weeks up to the end of the reference week (including the whole of the reference week) for reasons other than bad weather or plant breakdown.

14 *Actively looking for work* includes writing, telephoning or applying in person to an employer for work; answering a newspaper advertisement for a job; checking factory or Commonwealth Employment Service notice-boards; being registered with the Commonwealth Employment Service; checking or registering with any other employment agency; advertising or tendering for work; and contacting friends or relatives.

15 *The unemployment rate* for any group is the number unemployed expressed as a percentage of the labour force (i.e. employed plus unemployed) in the same group.

16 The *labour force* comprises all persons who, during the reference week, were employed or unemployed as defined above.

17 *Long term unemployed* comprises persons unemployed for a period of 52 weeks or more.

18 *Persons not in the labour force* are those who, during the reference week, were not in the categories *employed* or *unemployed* as defined above.

19 *The labour force participation rate* for any group is the labour force expressed as a percentage of the civilian population aged 15 years and over in the same group.

20 *Duration of unemployment* is the period from the time the person began looking for work or was stood down to the end of the reference week.

21 *Unemployed persons classified by industry and occupation.* Unemployed persons who had worked full-time for two weeks or more in the last two years are classified according to the industry and occupation of their most recent full-time job.

22 *Industry classification.* From August 1994, Labour Force Survey industry data are classified according to the *Australian and New Zealand Standard Industrial Classification (ANZSIC) 1993 (1292.0)*. For further information about the application of ANZSIC to Labour Force Survey data, see *Information Paper Labour Force Survey: Introduction of ANZSIC for industry data (6259.0)*.

23 *Occupation classification.* From August 1996, occupation data are classified according to the *Australian Standard Classification of Occupations (ASCO), Second Edition*. This replaces the First Edition which was introduced into the survey in August 1986. A detailed description of the new classification appears in *ASCO — Australian Standard Classification of Occupations, Information Paper (1221.0)*.

EXPLANATORY NOTES *continued*

.....

24 *Marital status.* In the labour force survey, persons are classified as *married* or *not married*. Persons are classified as *married* if they are reported as being married (including de facto) and their spouse was a usual resident of the household at the time of the survey.

25 *Persons attending school or a tertiary educational institution.* Persons attending school comprise those aged 15–19 years who, during the reference week, were enrolled full-time at secondary or high schools (including boarding school pupils). Persons attending a tertiary educational institution comprise those aged 15–24 years who were enrolled full-time at universities, colleges of advanced education, technical colleges, colleges of technical and further education, and theological colleges.

26 *Employment/population ratio.* For any group, the number of employed persons expressed as a percentage of the civilian population aged 15 years and over in the same group.

STATISTICAL AREAS

27 The regional structure for NSW used in tables 16–19 is based on the Statistical Region structure of the Australian Standard Geographical Classification (ASGC). For further information concerning statistical areas, please refer to pages 53–58 and the publications *Regional Statistics, New South Wales* (1304.1) and *Australian Standard Geographical Classification* (1216.0).

SEASONAL ADJUSTMENT AND TREND ESTIMATION

28 Seasonal adjustment is a means of removing the estimated effects of normal seasonal variation from the series so that the effects of other influences on the series can be more clearly recognised. Seasonal adjustment does not aim to remove the irregular or non-seasonal influences which may be present in any particular month. This means that month-to-month movements of the seasonally adjusted estimates may not be reliable indicators of trend behaviour. For example, irregular factors unrelated to the trend account for more than half the seasonally adjusted movement with the following frequency:

- Employment: 5 in 10 monthly movements
- Unemployment: 7 in 10 monthly movements
- Participation rate: 9 in 10 monthly movements

29 Smoothing seasonally adjusted series produces a measure of the underlying trend by reducing the impact of the irregular component of the series. The trend estimates are derived by applying a 13-term Henderson-weighted moving average to the respective seasonally adjusted series. While this smoothing technique enables estimates to be produced which include the latest month, it does result in revisions to the most recent months as additional observations become available.

30 Seasonally adjusted series for NSW appear in this publication in Table 2. Trend estimates for NSW and ACT appear in Tables 2 and 21 respectively. Seasonally adjusted data is not available for ACT.

RELIABILITY OF THE ESTIMATES

31 Estimates in this publication are subject to sampling and non-sampling errors. The Technical Note on pages 59–61 of this publication gives information on these sources of error.

EXPLANATORY NOTES *continued*

RELATED PUBLICATIONS

32 Users may also wish to refer to the following related publications which are available from the ABS Bookshop:

- *Regional Statistics, New South Wales* (1304.1) issued annually
- *Australian Capital Territory Business Indicators* (1303.8) issued monthly
- *Australian Capital Territory Statistical Summary* (1307.8) issued annually
- *Australian Capital Territory at a Glance* (1314.8) issued annually
- *A Guide to Smoothing Time Series — Estimates of 'Trend'* (1316.0)
- *Time Series Decomposition — An Overview* (1317.0)
- *Labour Statistics, Australia* (6101.0) issued annually
- *A Guide to Labour Statistics* (6102.0)
- *Labour Force, Australia, Preliminary* (6202.0) issued monthly
- *Labour Force, Australia* (6203.0) issued monthly
- *Information Paper: Labour Force Survey: Introduction of ANZSIC for Industry Data* (6259.0)
- *Information Paper: Labour Force Survey — Sample Design* (6269.0)
- *Technical Paper: The Labour Force, Australia: Preliminary Data on Floppy Disk — Technical Details* (6271.0)
- *Information Paper: ASCO — Australian Standard Classifications of Occupations* (1221.0)

ADDITIONAL DATA

33 In addition to the labour force survey, the ABS publishes a wide range of supplementary labour market information. For details see page 52 of this publication.

34 The ABS can also make available information which is not published. This information may be made available in one or more of the following forms: microfiche, photocopy, data tape, floppy disk, computer printout, clerically-extracted tabulation. In general, a charge is made for providing unpublished information.

ROUNDING

35 Figures have been rounded and discrepancies may occur between sums of the component items and the totals shown.

SYMBOLS AND OTHER USAGES

A	Area
C	City
MSR	Major Statistical Region
n.e.c.	not elsewhere classified
SD	Statistical Division
SR	Statistical Region
SRS	Statistical Region Sector
*	subject to sampling variability too high for most practical purposes. See paragraph 6 of the Technical Note on Data Reliability.
—	nil or rounded to zero (including null cells)

APPENDIX: Supplementary Topics

Although emphasis in the population survey is placed on the regular collection of data on demographic and labour force characteristics, supplementary and special surveys of particular aspects of the labour force are carried out from time to time.

It has been recent ABS practice to release statistics from supplementary and special surveys in Section B of 6203.0 *Labour Force, Australia*. This practice ceased with the release of the February 1996 issue of 6203.0. For future releases of supplementary labour data, separate publications containing summary results and key findings will be produced.

Equivalent tables at the State level are available on microfiche. In addition, other unpublished data can be provided to meet special requirements.

CATALOGUE/ PRODUCT NO.	TITLE OF PUBLICATION/STANDARD DATA SERVICE	PRICE (a) (\$)
6206.0.40.001*	Labour Force Experience, Australia, February 1995	17.50
6209.0	Labour Mobility, Australia, February 1996	16.00
6216.0.40.001*	Multiple Jobholding, Australia, August 1994	17.50
6220.0.40.001*	Persons Not in the Labour Force, Australia, September 1995	25.00
6222.0.40.001*	Job Search Experience of Unemployed Persons, Australia, July 1995	25.00
6224.0.40.001*	Labour Force Status and Other Characteristics of Families, Australia, June 1995	17.50
6227.0.40.001*	Transition from Education to Work, Australia, May 1995	20.00
6235.0	Labour Force Status and Educational Attainment, Australia, February 1994	13.00
6238.0.40.001*	Retirement and Retirement Intentions, Australia, November 1994	17.50
6243.0	Career Paths of Persons with Trade Qualifications, Australia, 1993	18.00
6245.0	Successful and Unsuccessful Job Search Experience, Australia, July 1994	13.00
6250.0	Labour Force Status and Other Characteristics of Migrants, Australia, September 1993	13.00
6254.0	Career Experience, Australia, February 1993	12.70
6264.0.40.001*	Persons who had re-entered the Labour Force, Australia, July 1995	25.00
6265.0.40.001*	Underemployed Workers, Australia, September 1995	25.00
6267.0.40.001*	Persons Who Have Left the Labour Force, Australia, September 1994	17.50
6272.0.40.001*	Participation in Education, Australia, September 1994	17.50
6275.0	Persons Employed at Home Australia, March 1992	12.50
6277.0	Career Paths of Qualified Nurses, Australia, March to July 1989	12.50
6278.0	Training and Education Experience, Australia, 1993	30.00
6310.0.40.001*	Weekly Earnings of Employees (Distribution), Australia, August 1995	25.00
6317.0	Annual and Long Service Leave Taken, Australia, May 1988 to April 1989	11.50
6319.0	Superannuation, Australia, November 1993	13.00
6325.0.40.001*	Trade Union Members, Australia, August 1994	17.50
6334.0.40.001*	Employment Benefits, Australia, August 1994	17.50
6342.0.40.001*	Working Arrangements, Australia, August 1995	25.00

(a) Prices quoted are subject to revision.

* Standard data service

APPENDIX: Regions of NSW

<i>Major Statistical Region</i>	<i>Statistical Region/ Statistical Region Sector</i>	<i>Statistical Local Area</i>
SYDNEY		
	Inner Sydney and Inner Western Sydney (SRs)	Ashfield (A) Botany (A) Burwood (A) Concord (A) Drummoyne (A) Leichhardt (A) Marrickville (A) South Sydney (C) Strathfield (A) Sydney (C) — Inner Sydney (C) — Remainder
	Inner Sydney (SR)	Botany (A) Leichhardt (A) Marrickville (A) South Sydney (C) Sydney (C) — Inner Sydney (C) — Remainder
	Eastern Suburbs (SR)	Randwick (C) Waverley (A) Woollahra (A)
	St George–Sutherland (SR)	Hurstville (C) Kogarah (A) Rockdale (A) Sutherland Shire (A)
	Canterbury–Bankstown (SR)	Bankstown (C) Canterbury (A)
	Fairfield–Liverpool and Outer South Western Sydney (SRs)	Camden (A) Campbelltown (C) Fairfield (C) Liverpool (C) Wollondilly (A)
	Fairfield–Liverpool (SR)	Fairfield (C) Liverpool (C)
	Central Western Sydney (SR)	Auburn (A) Holroyd (C) Parramatta (C)
	Outer Western Sydney (SR)	Blue Mountains (C) Hawkesbury (C) Penrith (C)

APPENDIX: Regions of NSW *continued*

<i>Major Statistical Region</i>	<i>Statistical Region/ Statistical Region Sector</i>	<i>Statistical Local Area</i>
SYDNEY <i>continued</i>		
	Blacktown-Baulkham Hills (SR)	Baulkham Hills (A) Blacktown (C)
	Lower Northern Sydney (SR)	Hunter's Hill (A) Lane Cove (A) Mosman (A) North Sydney (A) Ryde (C) Willoughby (C)
	Hornsby-Ku-ring-gai (SR)	Hornsby (A) Ku-ring-gai (A)
	Northern Beaches (SR) (a)	Manly (A) Pittwater (A) Warringah (A)
	Gosford-Wyong (SR)	Gosford (C) Wyong (A)
BALANCE OF NSW (b)		
	Hunter (SR)	Cessnock (C) Dungog (A) Gloucester (A) Great Lakes (A) Lake Macquarie (C) Maitland (C) Merriwa (A) Murrumbidgee (A) Muswellbrook (A) Newcastle (C) — Inner Newcastle (C) — Remainder Port Stephens (A) Scone (A) Singleton (A)
	Newcastle (SRS)	Cessnock (C) Lake Macquarie (C) Maitland (C) Newcastle (C) — Inner Newcastle (C) — Remainder Port Stephens (A)

APPENDIX: Regions of NSW *continued*

<i>Major Statistical Region</i>	<i>Statistical Region/ Statistical Region Sector</i>	<i>Statistical Local Area</i>
BALANCE OF NSW <i>continued</i>		
	Illawarra and South Eastern (SRs)	Bega Valley (A) Bombala (A) Boorowa (A) Cooma-Monaro (A) Crookwell (A) Eurobodalla (A) Goulburn (C) Gunning (A) Harden (A) Kiama (A) Mulwaree (A) Queanbeyan (C) Shellharbour (A) Shoalhaven (C) Snowy River (A) Tallaganda (A) Wingecaribee (A) Wollongong (C) Yarrowlumla (A) Yass (A) Young (A)
	Illawarra (SR)	Kiama (A) Shellharbour (A) Shoalhaven (C) Wingecaribee (A) Wollongong (C)
	Wollongong (SRS)	Kiama (A) Shellharbour (A) Wollongong (C)
	Richmond-Tweed and Mid-North Coast (SRs)	Ballina (A) Bellingen (A) Byron (A) Casino (A) Coffs Harbour (C) Copmanhurst (A) Grafton (C) Greater Taree (C) Hastings (A) Kempsey (A) Kyogle (A) Lismore (C) Lord Howe Island Maclean (A) Nambucca (A) Nymboida (A) Richmond River (A) Tweed (A) — Part A Tweed (A) — Part B Ulmarra (A)

APPENDIX: Regions of NSW *continued*

<i>Major Statistical Region</i>	<i>Statistical Region/ Statistical Region Sector</i>	<i>Statistical Local Area</i>
BALANCE OF NSW <i>continued</i>	Northern, Far West–North Western and Central West (SRs) (b)	Armidale (C) Barraba (A) Bathurst (C) Bingara (A) Bland (A) Blayney (A) — Part A Blayney (A) — Part B Bogan (A) Bourke (A) Brewarrina (A) Cabonne (A) — Part A Cabonne (A) — Part B Cabonne (A) — Part C Cobar (A) Coolah (A) Coonabarabran (A) Coonamble (A) Cowra (A) Dubbo (C) Dumaresq (A) Evans (A) — Part A Evans (A) — Part B Forbes (A) Gilgandra (A) Glen Innes (A) Greater Lithgow (C) Gunnedah (A) Guyra (A) Inverell (A) — Part A Inverell (A) — Part B Lachlan (A) Manilla (A) Moree Plains (A) Mudgee (A) Narrabri (A) Narramine (A) Nundle (A) Oberon (A) Orange (C) Parkes (A) Parry (A) Quirindi (A) Rylstone (A) Severn (A) Tamworth (C) Tenterfield (A) Walcha (A) Walgett (A) Warren (A) Weddin (A) Wellington (A) Yallaroi (A)

APPENDIX: Regions of NSW *continued*

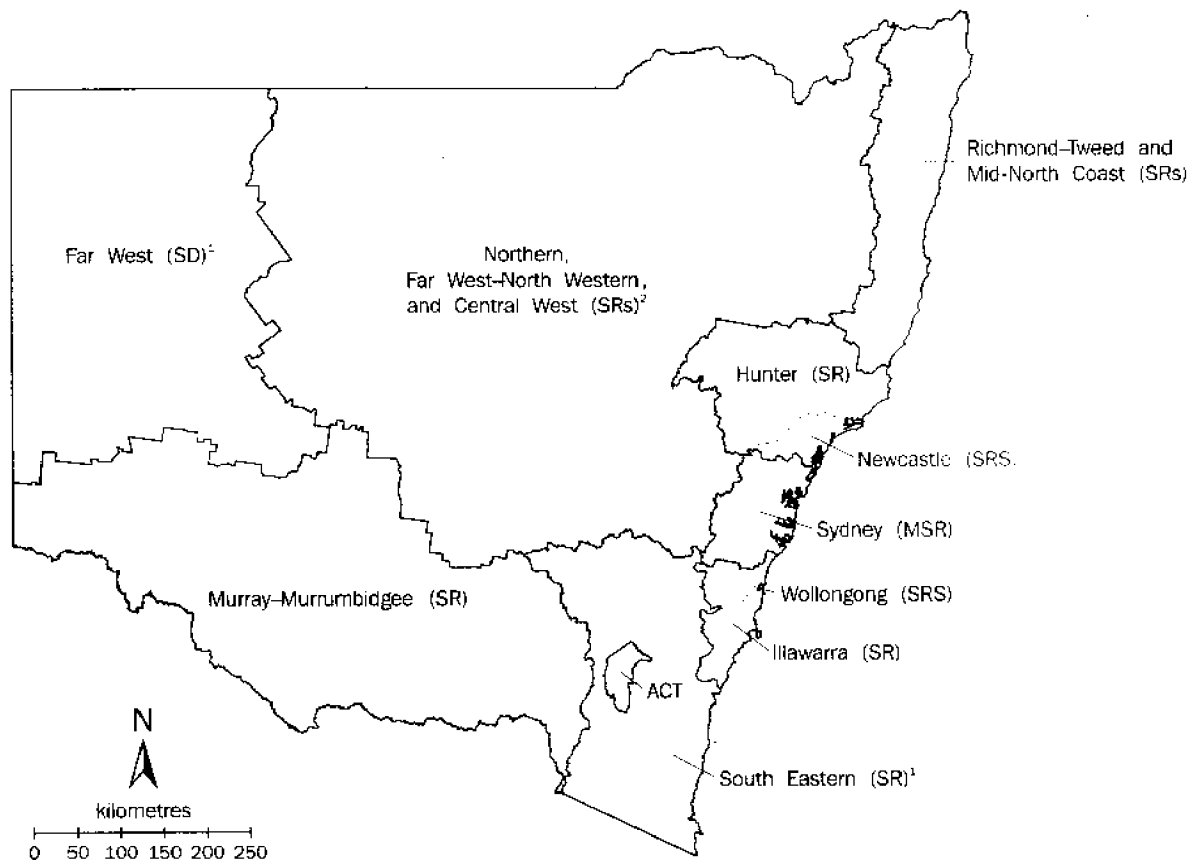
<i>Major Statistical Region</i>	<i>Statistical Region/ Statistical Region Sector</i>	<i>Statistical Local Area</i>
BALANCE OF NSW <i>continued</i>	Murray-Murrumbidgee (SR)	Albury (C) Balranald (A) Berrigan (A) Carrathool (A) Conargo (A) Coolamon (A) Cootamundra (A) Corowa (A) Culcairn (A) Deniliquin (A) Griffith (C) Gundagai (A) Hay (A) Holbrook (A) Hume (A) Jerilderie (A) Junee (A) Leeton (A) Lockhart (A) Murray (A) Murrumbidgee (A) Narrandera (A) Temora (A) Tumbarumba (A) Tumut (A) Urana (A) Wagga Wagga (C) Wakool (A) Wentworth (A) Windouran (A)

(a) Previously Manly-Warringah (SR).

(b) The statistical local areas which comprise Far West (SD) — Broken Hill (C), Central Darling (A), and Unincorporated Far West — are included in Balance of NSW (MSR), but excluded from Northern, Far West-North Western and Central West (SRs).

APPENDIX: Regions of NSW—Maps

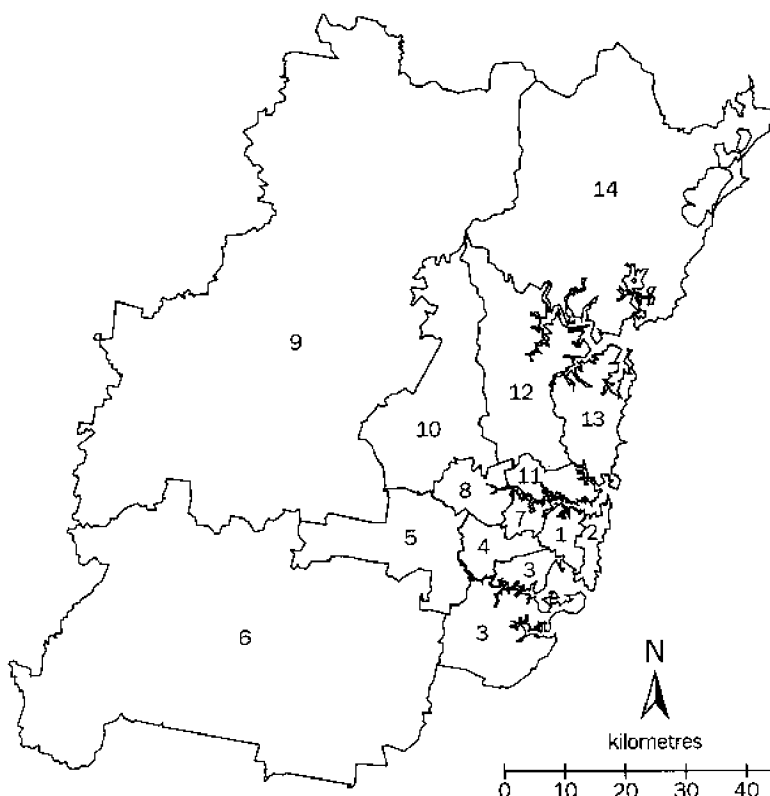
REGIONS OF NSW



¹ Not published separately

² Excludes Far West (SD)

REGIONS OF SYDNEY (MSR)



1. Inner Sydney (SR)
2. Eastern Suburbs (SR)
3. St George-Sutherland (SR)
4. Canterbury-Bankstown (SR)
5. Fairfield-Liverpool (SR)
6. Outer South Western Sydney (SR)¹
7. Inner Western Sydney (SR) (a)
8. Central Western Sydney (SR)
9. Outer Western Sydney (SR)
10. Blacktown-Baulkham Hills (SR)
11. Lower Northern Sydney (SR)
12. Hornsby-Ku-ring-gai (SR)
13. Northern Beaches (SR)
14. Gosford-Wyong (SR)

¹ Not published separately

TECHNICAL NOTE: Data Reliability

.....

SOURCES OF ERROR

There are a number of possible sources of error in sample surveys and these can be classified into two types: *sampling error*; and *non-sampling error*.

NON-SAMPLING ERRORS

Non-sampling errors may arise as a result of errors in the reporting, recording or processing of the data and can occur even if there is a complete enumeration of the population. Non-sampling errors can be introduced through: inadequacies in the questionnaire; non-response; inaccurate reporting by respondents; errors in the application of survey procedures; incorrect recording of answers; and errors in data entry and processing.

It is difficult to measure the size of the non-sampling errors and the extent of these errors could vary considerably in significance from survey to survey, and from question to question. However, every effort is made in the design of the survey and development of survey procedures to minimise the effect of these errors.

SAMPLING ERRORS

Sampling error is the error which occurs by chance because the data were only obtained from a sample, not the entire population.

Standard errors of estimates

One measure of the variability of estimates which occurs as a result of surveying only a sample of the population is the *standard error* (SE). There are about 2 chances in 3 that a survey estimate is within one standard error of the figure that would have been obtained if all persons had been included and about 19 chances in 20 that it is within two standard errors. That is, there are 19 chances in 20 that the true estimate is in the range—

$$X - 2 \times SE(X) \text{ to } X + 2 \times SE(X)$$

(where X is the estimate)

The standard error of an estimate can be obtained from the tables on pages 62–64. Linear interpolation should be used to calculate the standard error of estimates falling between the sizes of estimates listed in the (see example on page 61).

In the tables in this publication, only estimates with relative standard errors of 25% or less, and percentages based on such estimates, are considered sufficiently reliable for most purposes. However, estimates and percentages with larger relative standard errors have been included and are preceded by an asterisk (e.g. * 3.4) to indicate they are subject to high standard errors and should be used with caution.

The standard error can also be expressed as a percentage of the estimate and this is known as the *relative standard error* (RSE). The RSE is determined by dividing the standard error of an estimate $SE(X)$ by the estimate X and expressing it as a percentage. That is—

$$RSE(X) = \frac{SE(X) \times 100}{X}$$

(where X is the estimate)

The look up list on the following provides a guide for the calculation of standard errors and relative standard errors for a range of statistics.

TECHNICAL NOTE: Data Reliability *continued*

CALCULATING STANDARD ERRORS

The methods described below refer to the calculation of standard errors for NSW estimates. Standard errors of ACT estimates should be calculated from the table on page 64, using column 2 (from September 1992) instead of the table on page 62, and column 3 (Monthly movements for December 1992–January 1993 onwards) instead of the table on page 63.

MEASURE OF RELIABILITY TO BE DETERMINED	METHOD
Standard errors of estimates of employed persons.	Determine the SE from the table on page 62 directly.
Standard errors of estimates of unemployed persons.	Multiply the SE from the table on page 62 by 1.06.
Standard errors of estimates of persons not in the labour force.	Multiply the SE from the table on page 62 by 1.1.
Standard errors of rates (e.g. the unemployment rate which is based on the number of unemployed persons expressed as a percentage of the number of persons in the labour force).	Determine the RSE of the numerator (X) and the denominator (Y) then apply the following formula. $RSE\left(\frac{X}{Y}\right) = \sqrt{[RSE(X)]^2 + [RSE(Y)]^2}$
Standard error of average duration of unemployment.	Determine the RSE for the number of persons on which the average is based and multiply this by 1.3.
Standard error of median duration of unemployment.	Determine the RSE for the number of persons on which the average is based and multiply this by 2.0.
Standard error of monthly movements.	From the table on page 63, look up the SE of the larger estimate.
Standard error of quarterly movements.	Determine the standard error of the larger estimate from the table on page 62 and multiply this by 1.11.
Standard error of annual movements.	Determine the standard error of the larger estimate from the table on page 62 and multiply this by 1.3.

LINEAR INTERPOLATION

Linear interpolation is used to determine the standard error of an estimate which falls between two values listed in the *size of estimate* column in the tables on page 62 or 63. Linear interpolation is best described using an example. In August 1996, there were 657,600 (X_e) employed persons working part-time in New South Wales. This estimate falls between the values 500,000 (X_l) and 1,000,000 (X_u) in the table on page 62.

The standard error of the estimate is determined as follows. Firstly calculate

$$\begin{aligned} F &= \frac{X_e - X_l}{X_u - X_l} \\ &= \frac{657,600 - 500,000}{1,000,000 - 500,000} \\ &= 0.32 \end{aligned}$$

Secondly, calculate the standard error of the estimate, $SE(X_e)$ thus:

$$\begin{aligned} SE(X_e) &= SE(X_l) + \left(F \times [SE(X_u) - SE(X_l)] \right) \\ &= 8,800 + (0.32 \times [11,300 - 8,000]) \\ &= 9,856 \end{aligned}$$

Therefore the standard error of the number of employed persons in August 1996 working part-time in New South Wales (657,600) is 9,856.

STANDARD ERRORS: Level Estimates(a)—NSW

REGIONS IN SYDNEY (MSR).....

Size of estimate	NSW; Sydney (MSR); Balance of NSW (MSR)	Inner Sydney and Inner Western Sydney (SRs)	Inner Sydney (SR)	Eastern Suburbs (SR)	St George— Sutherland (SR)	Canterbury— Bankstown (SR)	Fairfield— Liverpool and Outer South Western Sydney (SRs)	Fairfield— Liverpool (SR)
500	420	340	330	300	300	280	330	290
1 000	590	500	480	430	430	410	470	410
3 000	1 000	890	860	770	780	740	850	750
5 000	1 300	1 150	1 150	1 000	1 050	970	1 100	980
10 000	1 750	1 700	1 650	1 500	1 500	1 400	1 650	1 450
20 000	2 400	2 450	2 450	2 200	2 200	2 100	2 350	2 100
50 000	3 550	4 050	4 050	3 650	3 700	3 500	3 850	3 500
100 000	4 750	5 900	6 000	5 400	5 500	5 200	5 600	5 200
200 000	6 200	8 600	8 900	8 000	8 100	7 700	8 200	7 700
300 000	7 300	10 700	11 300	10 100	10 200	9 700	10 200	9 800
500 000	8 800	14 200	15 200	13 600	13 800	13 000	13 500	13 100
1 000 000	11 300							
2 000 000	14 300							
5 000 000	19 300							

REGIONS IN SYDNEY (MSR) continued.....

Size of estimate	Central Western Sydney (SR)	Outer Western Sydney (SR)	Blacktown— Baulkham Hills (SR)	Lower Northern Sydney (SR)	Hornsby Ku-ring-gai (SR)	Northern Beaches (SR)	Gosford— Wyong (SR)
500	300	310	270	360	320	250	330
1 000	440	450	390	520	460	360	470
3 000	790	820	700	940	830	650	850
5 000	1 050	1 100	920	1 250	1 100	860	1 150
10 000	1 500	1 550	1 350	1 800	1 600	1 250	1 650
20 000	2 250	2 300	1 950	2 650	2 350	1 850	2 400
50 000	3 750	3 850	3 300	4 450	3 900	3 100	4 050
100 000	5 500	5 700	4 850	6 500	5 800	4 550	6 000
200 000	8 200	8 500	7 200	9 700	8 600	6 800	8 900
300 000	10 300	10 700	9 100	12 300	10 900	8 500	11 200

REGIONS IN BALANCE OF NSW (MSR).....

Size of estimate	Hunter (SR)	Newcastle (SRS)	Illawarra and South Eastern (SRs)	Illawarra (SR)	Wollongong (SRS)	Richmond— Tweed and Mid-North Coast (SRs)	Northern, Far West— North Western and Central West (SRs)	Murray— Murrumbidgee (SR)
500	350	330	330	310	270	370	360	360
1 000	500	480	480	450	390	530	520	520
3 000	900	870	870	810	710	950	940	940
5 000	1 200	1 150	1 150	1 050	940	1 250	1 250	1 250
10 000	1 700	1 650	1 650	1 550	1 350	1 850	1 800	1 800
20 000	2 500	2 450	2 400	2 250	2 000	2 700	2 650	2 650
50 000	4 100	4 100	3 950	3 700	3 350	4 500	4 450	4 400
100 000	6 000	6 000	5 700	5 400	4 950	6 600	6 600	6 500
200 000	8 700	9 000	8 400	7 800	7 300	9 900	9 800	9 700
300 000	10 900	11 300	10 400	9 800	9 300	12 400	12 300	12 300

(a) Standard errors of estimates from September 1992. For standard errors for earlier periods, see previous issues of this publication.

STANDARD ERRORS: Movement Estimates(a)—NSW

REGIONS IN SYDNEY (MSR).....

Size of estimate	NSW; Sydney (MSR); Balance of NSW (MSR)	Inner Sydney and Inner Western Sydney (SRs)	Inner Sydney (SR)	Eastern Suburbs (SR)	St George- Sutherland (SR)	Canterbury- Bankstown (SR)	Fairfield- Liverpool and Outer South Western Sydney (SRs)	Fairfield- Liverpool (SR)
500	540	330	270	260	240	240	290	220
1 000	690	440	360	350	330	330	390	300
3 000	1 050	700	600	580	540	540	630	500
5 000	1 250	870	750	730	680	680	780	630
10 000	1 600	1 150	1 050	990	930	930	1 050	860
20 000	2 050	1 550	1 400	1 350	1 250	1 250	1 400	1 150
50 000	2 900	2 300	2 150	2 050	1 950	1 900	2 050	1 750
100 000	3 700	3 100	2 900	2 800	2 650	2 650	2 800	2 400
200 000	4 750	4 200	4 000	3 850	3 600	3 600	3 750	3 300
300 000	5 500	5 000	4 800	4 600	4 350	4 300	4 400	4 400
500 000	6 700	6 200	6 000	5 800	5 400	5 400	5 500	5 000
1 000 000	8 600							
2 000 000	11 100							
5 000 000	15 500							

REGIONS IN SYDNEY (MSR) continued.....

Size of estimate	Central Western Sydney (SR)	Outer Western Sydney (SR)	Blacktown- Baulkham Hills (SR)	Lower Northern Sydney (SR)	Hornsby- Ku-ring-gai (SR)	Northern Beaches (SR)	Gosford- Wyong (SR)
500	220	240	250	290	230	210	270
1 000	300	330	340	400	310	280	380
3 000	490	540	560	660	510	470	620
5 000	610	680	700	830	640	590	780
10 000	840	940	960	1 150	870	800	1 050
20 000	1 150	1 300	1 300	1 550	1 200	1 100	1 450
50 000	1 750	1 950	2 000	2 350	1 800	1 650	2 200
100 000	2 350	2 650	2 700	3 200	2 450	2 250	3 000
200 000	3 250	3 600	3 700	4 400	3 400	3 100	4 100
300 000	3 900	4 350	4 450	5 300	4 050	3 750	4 950

REGIONS IN BALANCE OF NSW (MSR).....

Size of estimate	Hunter (SR)	Newcastle (SRs)	Illawarra and South Eastern (SRs)	Illawarra (SR)	Wollongong (SRs)	Richmond- Tweed and Mid-North Coast (SRs)	Northern, Far West- North Western and Central West (SRs)	Murray- Murrumbidgee (SR)
500	320	280	340	340	260	300	340	290
1 000	430	390	460	460	350	420	470	400
3 000	690	640	740	730	580	680	760	660
5 000	860	800	910	910	730	860	960	830
10 000	1 150	1 100	1 250	1 200	990	1 200	1 300	1 150
20 000	1 550	1 500	1 650	1 650	1 350	1 600	1 800	1 550
50 000	2 300	2 250	2 450	2 400	2 050	2 450	2 750	2 350
100 000	3 100	3 100	3 250	3 250	2 800	3 350	3 750	3 200
200 000	4 150	4 250	4 400	4 350	3 850	4 550	5 100	4 350
300 000	4 900	5 100	5 200	5 200	4 600	5 500	6 100	5 200

(a) Standard errors of month to month movements from December 1992-January 1993 onwards. For standard errors for earlier periods, see previous issues of this publication.

STANDARD ERRORS: Level & Movement Estimates(a)—ACT

Size of estimate	From September 1992 (a)	Monthly movements for December 1992– January 1993 onwards (a)
500	180	150
1 000	240	220
3 000	390	320
5 000	490	390
10 000	640	500
20 000	840	640
50 000	1 200	900
100 000	1 550	1 150
200 000	1 950	1 500
300 000	2 250	1 750

(a) For standard errors for earlier periods, see *Labour Force, Australia* (6203.0).

For more information . . .

The ABS publishes a wide range of statistics and other information on Australia's economic and social conditions. Details of what is available in various publications and other products can be found in the ABS Catalogue of Publications and Products available from all ABS Offices.

ABS Products and Services

Many standard products are available from ABS bookshops located in each State and Territory. In addition to these products, information tailored to the needs of clients can be obtained on a wide range of media by contacting your nearest ABS Office. The ABS also provides a Subscription Service for standard products and some tailored information services.

National Dial-a-Statistic Line

0055 86 400

Steadycom P/L: premium rate 25c/20 secs.

This number gives 24-hour access, 365 days a year, for a range of important economic statistics including the CPI.

Internet

<http://www.abs.gov.au>

A wide range of ABS information is available via the Internet, with basic statistics available for each State, Territory and Australia. We also have Key National Indicators, ABS product release details and other information of general interest.

Sales and Inquiries

Keylink STAT.INFO/ABS
X.400 (C:Australia,PUB:Telememo,O:ABS,FN:STAT,SN:INFO)
Internet stat.info@abs.telememo.au

National Mail Order Service
Subscription Service

(06) 252 5249
1800 02 0608

	Information Inquiries	Bookshop Sales
SYDNEY	(02) 9268 4611	(02) 9268 4620
MELBOURNE	(03) 9615 7755	(03) 9615 7755
BRISBANE	(07) 3222 6351	(07) 3222 6350
PERTH	(09) 360 5140	(09) 360 5307
ADELAIDE	(08) 8237 7100	(08) 8237 7582
CANBERRA	(06) 252 6627	(06) 207 0326
HOBART	(03) 6220 5800	(03) 6220 5800
DARWIN	(08) 8943 2111	(08) 8943 2111



Client Services, ABS, PO Box 10, Belconnen ACT 2616

